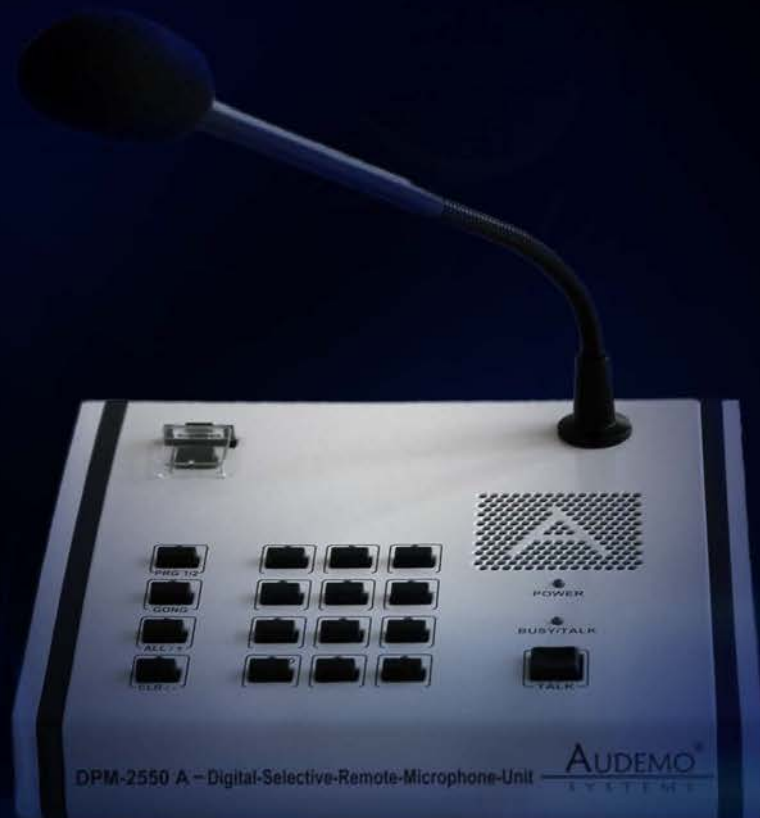


AUDEMO[®]

S Y S T E M S



COMPANY PROFILE

2024/2025

PAVA, BGM and Professional Public Address

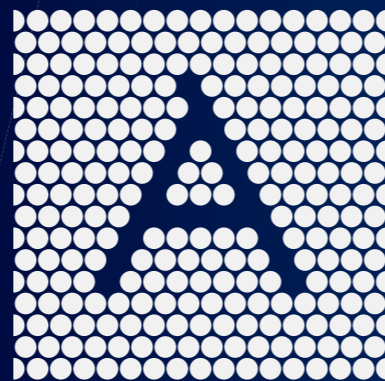




Contents

05	Introduction
06	About Us
08	Applications
10	Connectivity and Structure
12	Digital Audio Matrix Amplifiers
18	Microphone Unit & Paging Microphones
20	Volume Control, Channel Selector & Audio Mixer
26	Loudspeakers
40	References

AUDEMO is part of HP holding GmbH group



The holding is running several companies, while the team has more than 35 years of experiences. The development, engineering and production of the components takes place under our own facilities in Germany.

Our team structure has high level of homogeneity starting from R&D, design, production, sales, after sales and technical supports.

About Us

Audemo Systems is synonymous with high-fidelity audio communication systems for the safety and comfort of occupants in public and private spaces. We specialize in the engineering, manufacturing and distribution of public address, voice alarm and commercial audio systems for commercial, public, and residential buildings.

Our product development strategy is centered on achieving the highest possible levels of sound quality and speech intelligibility, backed by decades of research and development in electroacoustics and cross-sector expertise. Our product design philosophy is characterized by ease of use and seamless integration with building management systems. Our brand promise of 'Made in Germany' reflects the superiority of our research and development, quality of our products, and compliance with all international standards.

We have a no-compromise attitude and customer-centric company culture which allows us to engage with all our stakeholders, identify emerging needs, and respond with agility to any market requirement. This makes us uniquely positioned to offer the combined advantages of modularity, scalability, redundancy, and backward compatibility across our product range.



Features

- All our products are modular and easily expandable.
- Full networkable over TCP/IP media
- Dante enabled
- Dedicated fiber optic connectivity
- SIP Integration
- DSP based controller
- Friendly used interface
- Aesthetic view options for exposed items



Mission

We harness the potential of digital audio to deliver the right message and music at the right time and place.



Vision

To augment safety and spatial experience with the power of electroacoustics.

Our Applications

Scalable for every building and application

Education • Health • Hospitality • Military • Industrial • Theme Parks • Residential
Correction Facilities • Ministries • Retails • Transportation • Stadiums and Arenas

IP based Intercom System

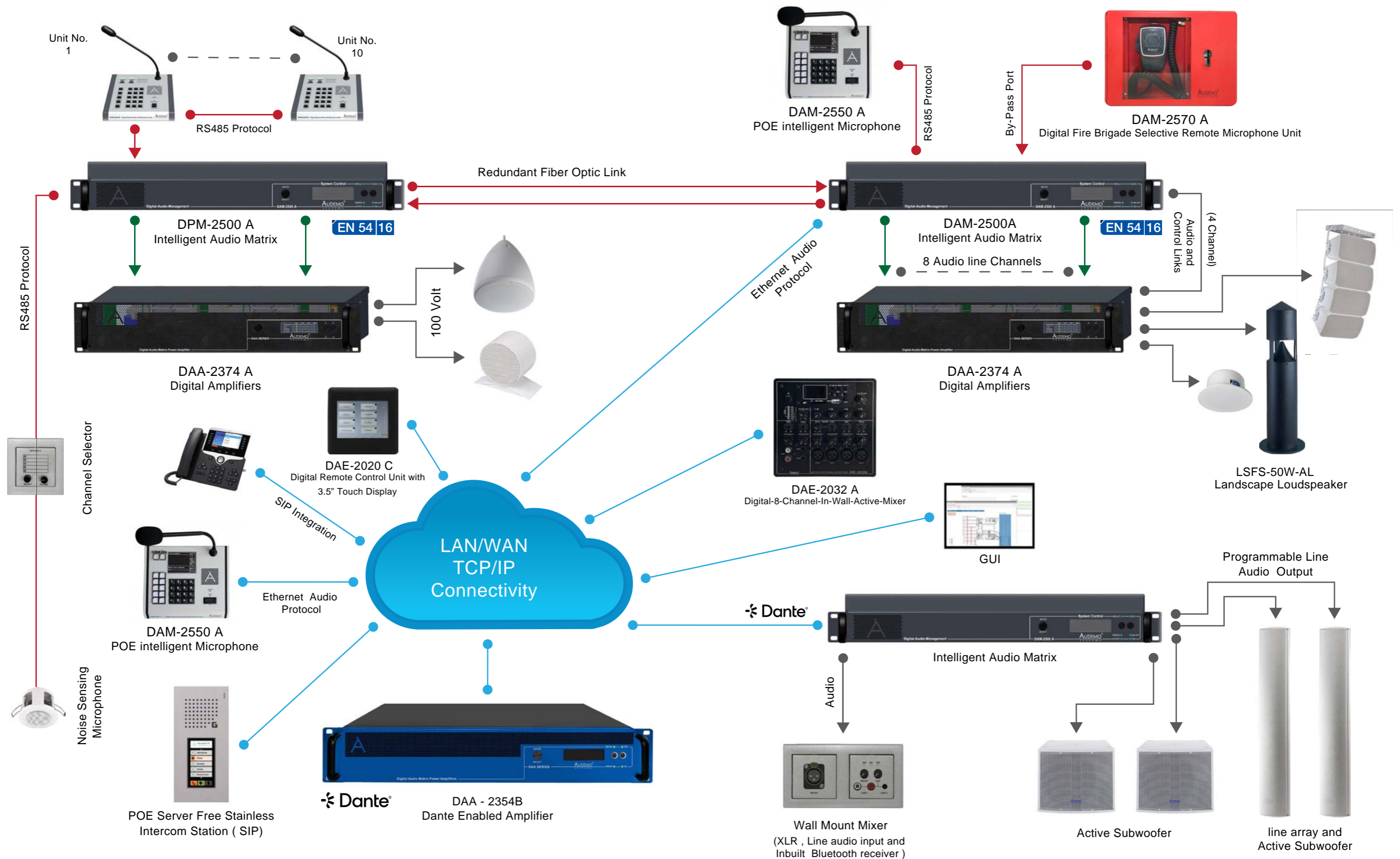
Public Address and Voice Alarm System

IP based Public Address System

Audio Visual Control System

Connectivity and Structure

PAVA and Commercial Audio Connectivity



Digital Audio Management Unit (DAM-2500A)



EN 54 16

Supported by UI-BA graphics user interface and windows based tablet



Technical Features

- Matrix 8x8, expandable
- Matrix 16x16 expandable
- DSP Based
- Inbuilt delay function
- Inbuilt software digital time event control module DCM-2881 A
- 4GB (48KHz + 16bit) message storage
- Fire alarm interface via DMS-2061A
- 10 control module (optional) – model number DMS-2033B
- Supports DMS2041 noise sensing microphone
- Input (Mic) -50 dBu, 600 ohms, balanced
- Input (Mic) -10 dBu, 600 ohms, balanced
- Input phantom power or VOX input type
- Programmable inputs
- Built-in POE
- Bypass functionality
- Gain control -42dB
- GPS port
- Optional DANTE module – Dual port DMS-2034 A
- Ethernet card – DMS-2036 A
- 48 kHz and 24 bits network connectivity
- Fiber optic network module – DMS-2062 AM / DMS-2062 AS
- Frequency range 20-20,000 Hz
- Distortion <0.01%
- Signal-to-noise ratio >92 dB
- Power supply (main supply) 220-240V AC, 50/60 Hz
- Power supply (backup supply) 24V DC
- Integrated 32-bit ARM Cortex M3 digital Processor (120 MHz)

Display Function

The color of the backlighting of the display is switched depending on the activated operating mode.

The following assignments result

1. **Snooze mode is active**
2. **Normal operation**
3. **Fault status**
4. **Emergency status is active**
5. **Service mode is active**



Digital Audio Matrix DPM-2500 A



EN 54 16

Supported by UI-BA graphics user interface and windows based tablet



Technical Features

- Matrix 4x4 expandable to 8x8 and 12x12
- Inbuilt equalizer, AGC, HPF, LPF and mixer (DSP Based)
- Inbuilt software digital time event control module DCM-2881 A
- 4GB (48 kHz + 16 bit) messages storage
- Five control input/output
- 10 control module (optional) – Model number DMS-2033 B
- Input (Mic) -50 dBu, 600 ohms, balanced
- Input (Line) -10 dBu, 600 ohms, balanced
- Input phantom power or VOX input type
- Programmable inputs
- Four outputs 0/+6 dB, 600 ohms, balanced connection

technology 2x RJ45, Bus type RS485

- GPS Port
- Optional DANTE module – dual port DMS-2034 A
- Ethernet card – DMS-2036 A
- 48 kHz and 24 bits network connectivity
- Fiber optic network module – DMS-2062 AM / DMS-2062 AS
- Frequency range 20-20,000 Hz
- Distortion <0.01%
- Signal-to-noise ratio >92 dB
- Power supply (main supply) 220-240V AC, 50/60 Hz
- Optional power supply (backup supply) 24V DC
- Integrated 32-bit ARM Cortex M3 digital Processor (120 MHz)



Equalizer tool
(For example: High Pass Filter)

Digital Audio Matrix DPM-2500 P



Supported by UI-BA graphics user interface
and windows based tablet



Technical Features

- Matrix 8x8 expandable to 12 inputs/outputs
- Inbuilt equalizer, AGC, HPF, LPF and mixer
- Inbuilt software digital time event control module DCM-2881 A
- 4GB (48 kHz + 16 bit) messages storage
- Five control input/output
- 10 control module (optional) – Model number DMS-2033 B
- Input (Mic) -50 dBu, 600 ohms, balanced
- Input (Line) -10 dBu, 600 ohms, balanced
- Input phantom power or VOX input type
- Programmable inputs
- Four outputs 0/+6 dB, 600 ohms, balanced connection technology 2x RJ45, Bus type RS485

- GPS Port
- Optional DANTE module – dual port DMS-2034 A
- Ethernet card – DMS-2036 A
- 48 kHz and 24 bits network connectivity
- Fiber optic network module – DMS-2062 AM / DMS-2062 AS
- Frequency range 20-20,000 Hz
- Distortion <0.01%
- Signal-to-noise ratio >92 dB
- Power supply (main supply) 220-240V AC, 50/60 Hz
- Optional power supply (backup supply) 24V DC

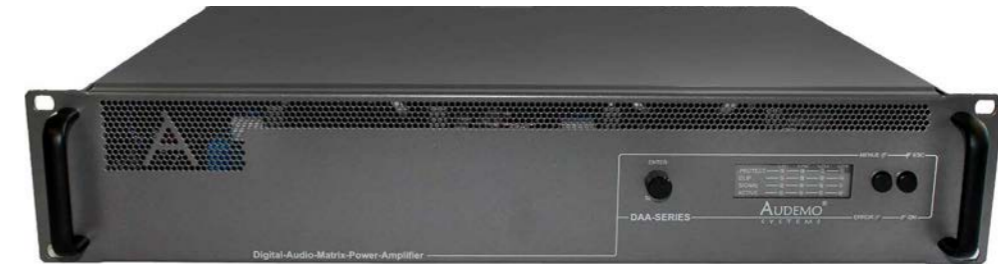
Graphics User Interface UI-BA

Technical Features

- Windows based
- Initiate any pre-recorded message
- Volume / Source Selection Control
- Disable/Enable (Music Source and Zones)
- Events and history log
- History: Up to 2048
- Ability to import graphics and create icons



Digital Audio Matrix Amplifier DAA-237X



EN 54 16

Models

- DAA - 2371B DAA - 2372B DAA - 2372C DAA - 2370B
- DAA - 2374B DAA - 2374C

Technical Features

- 100 Volts type
- Output power load: 1x300W, 2x400W, 2x600W, 1x600W, 4x300W, 4x600W
- Input sensitivity 1V, 10 kOhm, balanced
- Frequency range 20-20,000 Hz
- Signal-to-noise ratio >103 dB
- Crosstalk attenuation 85 dB
- Distortion <0.29%

- Inbuilt equalizer 3 band
- Power supply (main supply) 220-240V AC, 50/60 Hz
- Isolated PCB for each channel amplifier
- Inbuilt two cooling fans /dust proof
- Inbuilt two temperature sensors
- Dedicated 24V DC power for each amplifier channel
- Inbuilt digital audio amplifier control module – DAA-2310 B
- Inbuilt interface module RS232 – DAA-2387 B

Dante Enabled Digital Audio Matrix Power Amplifier DAA-2358 A, DAA-2354 B and DAA-2354 C



Technical Features

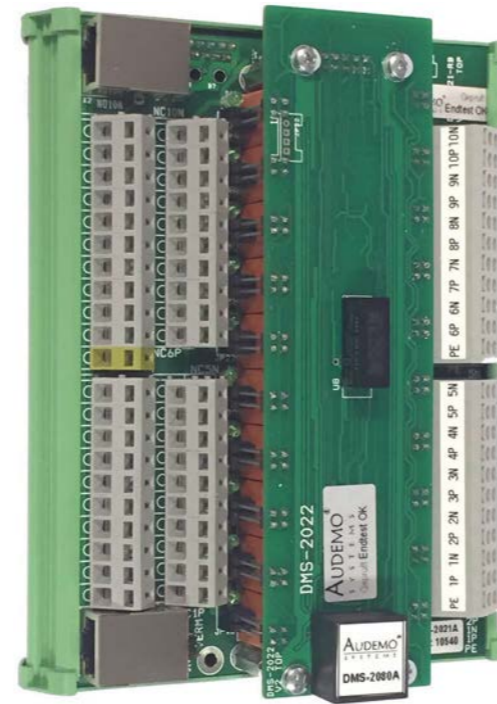
- 100 Volt type
- Delay function up to 42 seconds
- Frequency range 20-20,000 Hz
- Signal to noise ratio: >103 dB
- Load: 8x100W, 4x300W, 4x600W
- Inbuilt Dante card: 8Inx8OUT (DMS-2034 B)
- Inbuilt TCP/IP Card: DMS-2036 B

- Equalizer: 30 bands at each input/output
- Operating temperature: -5 °C to +55 °C
- Distortion factor: <0.29%
- Input sensitivity 1V, 10 kOhm, balanced
- Crosstalk attenuation: 85 dB
- Power supply (main supply) 220-240V AC, 50/60 Hz
- Power supply (backup supply) 24V DC
- Integral IO-MOD port

Digital Programmable Matrix Relay Module DMS-2021 A & DMS-2022 A

The digital programmable matrix relay module DMS-2021 A switches 5 separate 100v signals on all poles for controlling the speaker lines (Class A wiring). A 5-channel output load distribution matrix in service-friendly plug-in technology and a slot for the digital line measurement are integrated. The internal controller with a 32-bit 100 MHz processor communicates via CAN interface and 2 RJ-45 system connection sockets with the higher-level system for automatic configuration and data transmission, as well as for permanent self-monitoring.

The switching state of the 5 freely programmable relay is indicated by LED. In connection with a DMS-2021 A, the Digital-Line-Measurement-Module DMS-2022 A offers the possibility to measure every single speaker line in defined, minute-preselect able measurement intervals. The measuring tolerance can be set per line in 1% increments up to 25%. The module is connected using a system connector on the DMS-2021 A adapted.



Low Impedance Class D Amplifier DAA 236X Series

DAA-2361A (1 x 500 W), DAA-2362A (2 x 250 W), DAA-23628 (2 x 500W),
DAA-2362C (2 x 1 000W), DAA-2364A (4 x 250W), DAA-23648 (4 x 500W)



Technical Features

- >2 Ohm
- 240V AC, 50Hz/60Hz
- 1x500W, 2x250W, 2x500W, 2x1000W, 4x250W, 4x500W
- Input sensitivity 1V, 10 kOhm, balanced
- Frequency range: 20-20,000 Hz
- Signal-to-noise ratio >103 dB
- Crosstalk attenuations 85 dB
- Distortion <0.29%
- RJ45 for control from main Audemo DSP controller

Digital Emergency Unit DEU-2700 A

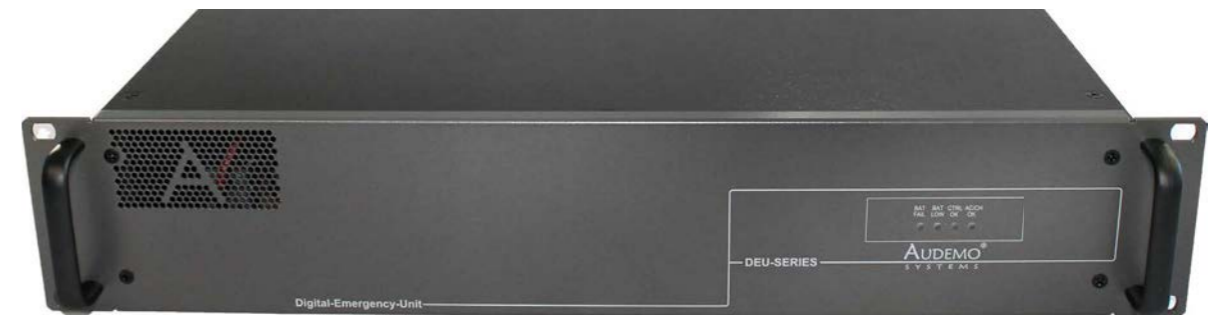


EN 54 4

Technical Features

- DEU-2700 A Digital-Emergency-Unit incl. Battery-Temperature-Sensor
- Up to six switching outputs
- Output current per switching output: 40A
- 2 x RJ45 connection technology to main DAA controller
- Battery capacity up to 140 Ah (24V / 2x 7 Ah)
- Digital battery power extension module (Total: 12 switching output)
- Sensing device: -50 °C to +150 °C (up to two sensors)
- IP54 protection for the battery temperature sensor

Digital Emergency Unit DEU-2700 D



EN 54 4

Technical Features

- Not integrated power supply equipment according to EN54-4 / A2
- Main power unit providing 24V DC with I_{max} b=8A
- 6 fuse protected DC outputs, maximum 30 A each at battery power
- 3 Auxiliary outputs for consumers
- Battery charger and power manager with total discharge protection
- Soft start characteristic
- Smart battery condition monitoring
- Thermal regulated end of charge voltage
- Zero interruption when switching from one to another energy source
- Battery Temperature Sensor
- Up to six switching outputs
- Output current per switching output: 30 A
- Battery capacity up to 150 Ah

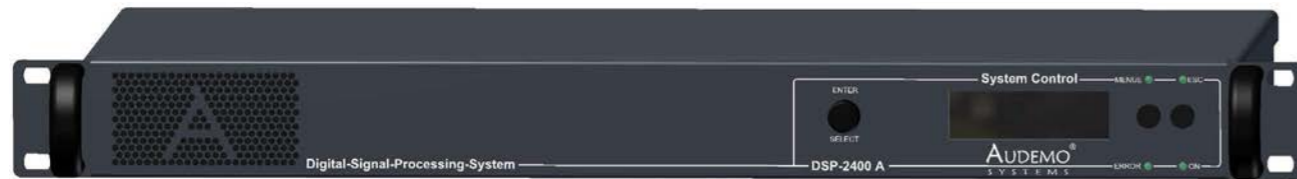
Digital Monitor Device DMD-2100 A



Technical Features

- Low height, only 1U
- Up to 20 audio input sources can be connected directly
- Switchable input levels configurable for each channel
- High reproduction quality thanks to internal signal processing
- Input selection and volume adjustable via simple menu function
- Operation via 230V AC and/or 24V DC with automatic switching

Digital Signal Processing Unit DSP-2400 A



The Digital Signal Processing Unit DSP-2400 A is a universal and flexible signal processing system. The unit can be used as a 5x5 matrix with high-performance A/D and D/A converters with 128x oversampling for unadulterated reproduction of speech and music and integrated programmable, digital linking of the functional modules to avoid conversion losses. The input and output channel gain can be adjusted from 0 to 59.9 dB in 0.5 dB steps.

The modules are :

- **Digital active speaker management modules DSP-2420 A:** Active electronic 2-way crossover with adjustable high and low pass filters, crossover parameters, short delay for runtime corrections up to 50ms and digital sound processor as well as optimized, stored factory presets for various AUDEMO®-SYSTEMS speaker combinations.
- **Digital 30-band graphic equalizer modules DSP-2430 A:** 30 band third-octave equalizer, control range +/- 12 dB in 0.25 dB steps, with adjustable low and high pass filters, short delay for time correction up to 50ms and digital sound processor.
- **Digital 10 Band Parametric Equalizer Modules DSP-2431 A:** 10 Band Parametric Equalizer with adjustable filter bandwidth and blocking depth for each frequency band, control range +/- 12 dB in 0.25 dB steps, with adjustable low and high pass filters, short delay for delay corrections up to 50ms and digital sound processor.

Equipment Racks DSR-1042 A



Technical Features

- 19-inch all-metal swing frame cabinets
- Designed according to DIN41494 are designed to accommodate 19-inch devices, slots, sub racks, as well as empty and ventilation panels.
- The cabinets have solid frame and wall constructions made from welded sheet steel profiles with holes for floor and wall anchoring.
- For ventilation, the installed devices have 40 supply air slots on both sides as well as exhaust air embossing on the roof.
- The DMS-2010 A temperature-controlled automatic digital climate control unit can be fitted to the roof as an option. (mechanically equipped)
- 42U installation dimensions max (W x H x D): 450 x 1870 x 490 mm
- Dimension of Rack (42U): 800 x 200 x 600 mm
- Weight (42U): 136 kg

Digital Paging Microphone DAM-2550 A (PoE)



EN 54 16

Technical Features

- Programmable Keypad
- Function: Live paging, Source Selection and Volume Control
- Electret cardioid
- Gooseneck length 280mm
- Frequency response: (-3 dBu) at 200-15 kHz
- THD: Less than 1% @ 1 kHz
- Line input 100-500mV
- Power supply 48V DC
- System connection RJ-45
- TCP-IP Based (PoE) type Integral Touch Screen ¼ VGA Display Full color
- RS485 option
- Password protection
- Speech level indication

Digital paging Microphone DPM-2550 A



EN 54 16

Technical Features

- Daisy chain up to 11 units over RS485- DPM-2550 A or DPM-2550 B
- TCP-IP based option is available
- Sensitivity control via button assignment
- Inbuilt Compressor / Gate and AGC
- Programmable Keypad
- Function: Live Paging
- Electret cardioid
- Gooseneck length 280mm
- Talk button 1
- Line input 100-500mV
- Frequency response: (-3 dBu) at 200-15 kHz
- THD: Less than 1% @ 1 kHz
- Power supply 24V DC through RJ45 port
- System connection RJ45
- Up to 64 IP based microphones can be connected over TCP/IP network

Digital Paging Microphone DAM-2570 A



EN 54 16

Technical Features

- Set up as a self-sufficient housing in standardized dimensions
- Optional integration into large housings possible
- Easy to use with the push-to-talk button on the hand microphone

- Already 10 freely programmable function keys available
- Up to 10 additional function key expansion modules, each with 10 keys, can be connected
- Permanent monitoring of all alarm-relevant parts
- Digital audio bus control for noise-free, synchronized switching to the audio bus
- Built-in low-noise microphone preamp
- Integrated dynamics processor to improve speech intelligibility in the event of an alarm by balancing the volume and suppressing overloads
- By-pass switch
- Integrated gate function which only opens the signal path when there is a direct microphone discussion
- Integrated concealed volume control
- Built-in concealed adjustable active 3-band tone control
- Studio AF output transformer DAM-2580 A (optional) for symmetrical, unearthed connection to the PADES®2000 System for maximum interference immunity and to eliminate ground loops, even over long transmission paths
- Permanent monitoring of all alarm-relevant parts

Digital-8-Channel-In-Wall-Active-Mixer DAE-2032 A



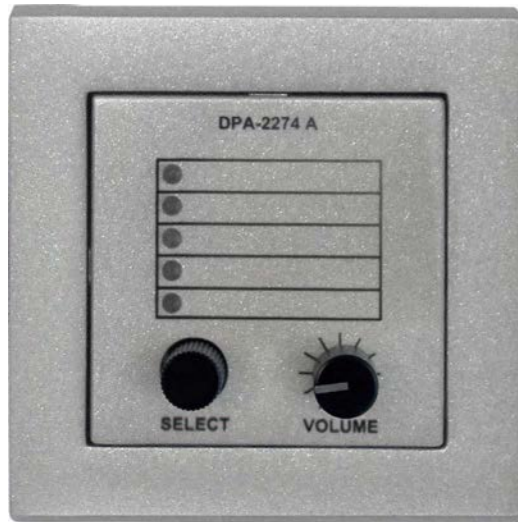
Dante
as option

Technical Features

- 4 microphone inputs on front-panel with XLR connectors and phantom-power (MIC 1-4)
- 4 microphone inputs at the backside with Phoenix connectors and switchable phantom-power (in parallel with MIC 1-4)
- 1 line input with Cinch connectors (AUX1)
- 2 line inputs with 3.5mm jack (AUX2 and AUX3)

- 1 line inputs with Phoenix connectors at the backside in parallel with (AUX3)
- Audio player module (MP3) with SD-card, USB and input (AUX4)
- Auxiliary relay input
- Input volume control for each microphone input (Backside microphone inputs in parallel to front side)
- Input volume control for each AUX input (Backside AUX input in parallel to front side of AUX3)
- Input volume control for MP3 player module
- Independent two band shelving equalizer for AUX-input group and MIC input group
- Ducking function controlled by MIC1 input (all other channels will be damped by the depth factor if the MIC1 input reaches the ducking limit)
- Dedicated ON switch for turning the In-Wall-Mixer on and off, Remote control contact available at the rear for controlling external devices (e.g. amplifiers)
- Monitoring of output level by 6 LEDs
- Front-panel in black or white colour available
- Electronical symmetrical output as a standard
- Optional output transformer mountable for insulated symmetrical output
- The unit can be supplied with DANTE enabled module DMS-2034 A for digital transmission
- Powered by 24V DC
- MP3 player module with built-in Bluetooth receiver. Plays from SD-card or USB. Source select, repeat mode, play-pause, next, forward, mute, LCD shows title number, playing time and status.

Volume Control & Channel Selector DPA-2274 A



Technical Features

- Selectable zones/sources up to 5
- Rotary switch control for zone/source selector
- One LED indicator for each list element
- Volume is Selectable from -75 dB to 0 dB
- 2 x RJ45 daisy chain communication through digital network interface module (DMS-2064 A)
- Ability to connect to 24 units
- Bus type: RS485, galvanically isolated
- Power supply: 24V DC via RJ45 receptable from ELA System

Digital Remote Control Unit with 3.5" Touch Display-In-Wall Mount Version DAE-2020 C



Technical Features

- Power Supply with PoE or Bus type RS485
- 3.5" TFT colour panel with touch
- Two operating modes:
 - a. Source selection and volume control of the selected source
 - b. Room selection and volume control of the selected room
- Up to 30 input sources/rooms
- Network Can accommodate Up to 32 numbers.
- Up to 24 pages within the display
- Adjustment and display of actual volume
- Three colour options: White, Black, Stainless steel

Stainless steel

Volume Control Unit MCVC-10W-LZ



Technical Features

- Rated Power: 10W
- Output impedance: 8 ohms
- Size: 87 x 87 x 48 mm



White



Black

In-Wall Audio Mixer (2 Active Channels Mixer) DAE-2021



Technical Features

The unit is used mainly as audio input to any audio visual or professional public address audio controller and power amplifier. The main features are listed below:

- An active 2-channel mixer for connecting and simultaneously operating one microphone with a balanced XLR input and integrated Phantom power
- Setting for high/low pass equalizer for XLR port
- A stereo sound carrier signal with input on a pair of cinch sockets
- 3.5mm stereo jack line input
- Each input has a scaled volume control and an LED function display for individual volume adjustment
- The output sum level can be switched internally from 0 dB to +6 dB
- The audio output is electronically balanced
- Using a connection plug, a Bluetooth unit can be integrated, the model number is DAE-2036 B
- The Bluetooth receiver is produced with specific password for pairing. The password could be changed upon the request of the client
- In case of use of DAE-2036 B, the three audio sources can be mixed
- Frequency response: 40-20 kHz
- Power supply 24V DC

Digital Classroom Panorama Stereo Sound Unit DAE-2029 A



Technical Features

- Active stereo mixer with a sensitivity input (-20 dBu) for connecting a projector or LCD display audio output. The digital classroom panorama stereo sound unit.
- Offers excellent reproduction of speech and music with contemporary sound reinforcement quality.
- Inbuilt volume control, LED signal activation and Mute input
- Internal 2x45/30W low impedance (ohm) digital amplifier to drive loudspeakers
- Frequency response: 40 – 20 kHz
- High quality sound reinforcement for classrooms or other similar locations up to a room size of approx. 70 m2 possible
- Expanded with the 2-channel extension unit DAE-2022 B
- to include a microphone input (XLR socket) and a line input (3.5mm jack)
- Both inputs of the DAE-2022 B can be used simultaneously in mixed operation and the volume can be controlled independently of each other. A signal display for each input channel enables an uncomplicated control of the fed audio signal.
- The connection to the DAE-2029 A is made via a standard CAT7 cable
- Powered by 240V AC 50 Hz/60 Hz and Dimensions (W x H x D) 155 x 81 x 31 mm
- Installation is carried out with the optional concealed frame DAE-2023 A (W x H x D) 149 x 80 x 68 mm

Noise Sensing Microphone DMS-2041 A



Technical Features

- 24V DC from digital sound level bus logic module DMS-2064 A
- Control signal: bidirectional, digital
- Maximum cable length for measurement bus is 500m
- Up to 24 daisy chain units per DMS-2041 A
- The cable type is CAT6
- Fully supervised from the DAA controller

Digital Sound-Level Measurement-Outdoor Unit DMS-2042 A



Technical Features

- Detection of the background noise of a sound reinforcement area
- Redundant microphones for increased safety
- Use as a line terminal or as an intermediate line module
- Reliable communication via RS485 Bus
- Switchable terminating resistor (for line terminal)
- Strain relief and shield connection via clamping bracket
- Waterproof cable entry with M-screw connection (1x for line terminal unit, 2x for intermediate line module)
- Usable connection cables: CAT7 or fire alarm cable 2 x 2 x 0.8 or 4 x 4 x 0.8
- IP-protected housing for outdoor mounting (IP66)

GPS Radio Receiver Module DCM-2860 A



Technical Features

- Power supply: 24V DC via 3-pin (Radio receiver connection on the DAA controllers)
- Connection cable: 3 pole, shielded cable with core cross section of 0.33-2.5mm2
- Maximum connection length is up to 200m
- Temperature range is -30 °C to +55 °C
- Protection class: IP54

Loudspeakers

CSFLD-06W-130

6 Watts Ceiling Loudspeaker - Frameless type

Applications

Public Address/Voice Alarm and Background Music		
Power (100V)	Sensitivity	Frequency Range
6/3/1.5 Tapping	(89 Hz – 11.2 kHz) EN54-24, 1W/1m = 90 dB	80 - 20,000 Hz
Dimension	Dispersion	Maximum cable cross section
180x99 mm	-6dB, 500Hz = h/v 180°, -6dB, 4kHz = h/v 75°	4mm ²



EN 54 24

CSSP-06W-140

6 Watts Ceiling Loudspeaker - Frameless type (IP54)

Applications

Public Address/Voice Alarm and Background Music		
Power (100V)	Sensitivity	Frequency Range
6/3/1.5 Tapping	(89 Hz – 11 kHz) EN54-24, 1W/1m = 80.5 dB	98 - 20,000 Hz
Dimension	Dispersion	Maximum cable cross section
140x98 mm	-6dB, 500Hz = h/v 180°, -6dB, 4kHz = h/v 81°	4mm ²



EN 54 24

CSSP-06W-140-LZ

6 Watts Ceiling Loudspeaker - Frameless type (IP54)

Applications

Public Address/Voice Alarm and Background Music		
Power	Sensitivity	Frequency Range
8 or 16 ohms, 6W	(89 Hz – 11 kHz) EN54-24, 1W/1m = 80.5 dB	98 - 20,000 Hz
Dimension	Dispersion	Maximum cable cross section
140x98 mm	-6dB, 500Hz = h/v 180°, -6dB, 4kHz = h/v 81°	4mm ²



EN 54 24

CSFD-06W-104

6 Watts Ceiling Loudspeaker - Frameless type

Applications

Public Address/Voice Alarm and Background Music		
Power (100V)	Sensitivity	Frequency Range
6/63/1.5W Tapping	(89 Hz – 11 kHz) EN54-24, 1W/1m = 80.4 dB	98 - 20,000 Hz
Dimension	Dispersion	Maximum cable cross section
104x100.5mm	-6dB, 500Hz = h/v 180°, -6dB, 4kHz = h/v 81°	4.9mm ²



EN 54 24

CSFLD-20W-200

20 Watts Ceiling Loudspeaker - Frameless type

Applications

Public Address/Voice Alarm and Background Music		
Power (100V)	Sensitivity	Frequency Range
20/10/5W Tapping	(89 Hz – 11 kHz) EN54-24, 1W/1m = 97.8 dB	60 - 17,500 Hz
Dimension	Dispersion	Maximum cable cross section
265x115mm	-6dB, 500Hz = h/v 180°, -6dB, 4kHz = h/v 60°	4mm ²



EN 54 24

CSFLD-50W-165

50 Watts Two-way Ceiling Loudspeaker – Frameless type

Applications

Public Address/Voice Alarm, Background Music and Audio Visual		
Power (100V)	Sensitivity	Frequency Range
50/25/12.5/6.25W Tapping	(89 Hz – 11 kHz) EN54-24, 1W/1m = 89.5 dB	65 - 24,000 Hz
Dimension	Dispersion	Maximum cable cross section
264x240mm	-6dB, 500Hz = h/v 180°, -6dB, 4kHz = h/v 56°	4.9mm ²



EN 54 24

CSFD-30W-200

30 Watts Two-way Ceiling Loudspeaker

Applications

Public Address/Voice Alarm, Background Music and Audio Visual		
Power (100V)	Sensitivity	Frequency Range
30/15/7.5/3.75W Tapping	(89 Hz – 11 kHz) EN54-24, 1W/1m = 89.8 dB	100 - 19,200 Hz
Dimension	Dispersion	Maximum cable cross section
239x254mm	-6dB, 500Hz = h/v 180°, -6dB, 4kHz = h/v 62°	4.9mm ²



EN 54 24

CSFLD-25W-130

25 Watts Two-way Ceiling Loudspeaker – Frameless Type
(Impact-resistant plastic housing)

Applications

Public Address/Voice Alarm, Background Music and Audio Visual		
Power (100V)	Sensitivity	Frequency Range
25/12.5/6.25W Tapping	(89 Hz – 11 kHz) EN54-24, 1W/1m = 87.8 dB	104 - 22,700 Hz
Dimension	Dispersion	Maximum cable cross section
216.5x141mm	-6dB, 500Hz = h/v 180°, -6dB, 4kHz = h/v 72°	4.9mm ²



EN 54 24

CSFLD-10W-165

10 Watts Ceiling Loudspeaker – Frameless Type

Applications

Public Address/Voice Alarm, Background Music and Audio Visual		
Power	Sensitivity	Frequency Range
10/5/2.5W Tapping	(89 Hz – 11 kHz) EN54-24, 1W/4m = 81.4 dB	63 - 16,000 Hz
Dimension	Dispersion	Maximum cable cross section
220 x 104 mm	-6dB, 500Hz = h/v 180°, -6dB, 4kHz = h/v 94°	4mm ²



EN 54 24

CS-06W-70-CS

6 Watts Compact Ceiling Loudspeaker

Applications

Public Address/Voice Alarm, Background Music and Audio Visual		
Power (100V)	Sensitivity	Frequency Range
6/3/1.5W Tapping	(89 Hz – 11 kHz) EN54-24, 1W/4m = 70 dB	200 - 20,500 Hz
Dimension	Dispersion	Mounting
104x70mm	-6dB, 500Hz = h/v 180°, -6dB, 4kHz = h/v 180°	Ball stud for angle joints



EN 54 24

CSFLD-15W-100-BR

15 Watts Ceiling Loudspeaker

Applications

Public Address/Voice Alarm and Background Music		
Power (100V)	Sensitivity	Frequency Range
5/7.5/3.75W Tapping	EN54-24, Pmax/4m = 81 dB	64 - 20,800 Hz
Dimension	Dispersion	
242x108mm	-6dB, 4kHz = h/v 95°	



EN 54 24

CSFLD-30W-130-BR

30 Watts Ceiling Loudspeaker

Applications

Public Address/Voice Alarm and Background Music		
Power (100V)	Sensitivity	Frequency Range
30/15/7.5W Tapping	EN54-24, Pmax/4m = 85.8 dB	62 - 23,700 Hz
Dimension	Dispersion	
320x128mm	-6dB, 4kHz = h/v 61°	



EN 54 24

CSFS-AB-06W-200

6 Watts Ceiling Loudspeaker (A/B Lines)

Applications

Public Address/Voice Alarm and Background Music		
Power (100V)	Sensitivity	Frequency Range
6/3/1.5W Tapping	EN54-24, 1W/1m = 89 dB	162 -18,600 Hz (Single), 159 -16,000 Hz (Double)
Dimension	Dispersion	Maximum cable cross section
268x136mm	-6dB, 500Hz = h/v 180°, -6dB, 1kHz = h/v 160°	8mm ² (Single)



EN 54 24

CSFLD-06W-66

6 Watts Ceiling Loudspeaker – Frameless Type

Applications

Public Address/Voice Alarm and Background Music		
Power (100V)	Sensitivity	Frequency Range
6/3/1.5W Tapping	EN54-24, 1W/1m = 68.4 dB	98 - 20,000 Hz
Dimension	Dispersion	Maximum cable cross section
105x83mm	-6dB, 500Hz = h/v 180°, -6dB, 4kHz = h/v 81°	4.9mm ²



WCS-06W-ABS

6 Watts Wall Mount (Cabinet Type) Loudspeaker (Impact resistant housing)

Applications

Public Address/Voice Alarm and Background Music		
Power (100V)	Sensitivity	Frequency Range
6/3/1.5W Tapping	(89 Hz – 11,000 Hz) EN54-24, 1W/4m = 72.9 dB	125 - 21,000 Hz
Dimension	Dispersion	Connector
133x133x72mm	-6dB, 500Hz = h/v 360°, -6dB, 4kHz = h/v 110°	4 pin ceramic block, IP Rating: IP54



EN 54 24

FMS-AB-06W-100

6 Watts Wall Mount (Cabinet Type) Loudspeaker (A/B Lines) IP54

Applications

Public Address/Voice Alarm and Background Music		
Power (100V)	Sensitivity	Frequency Range
2 x 6/3/1.5W Tapping	EN54-24, 1W/1m = 91.6 dB	227 -14,600 Hz (Single), 224 -14,300 Hz (Double)
Dimension	Dispersion	Maximum cable cross section
252x194x82mm	-6dB, 500Hz = h/v 180° (Double), -6dB, 1kHz = h/v 145°/130° (Double)	8mm ² (Single)



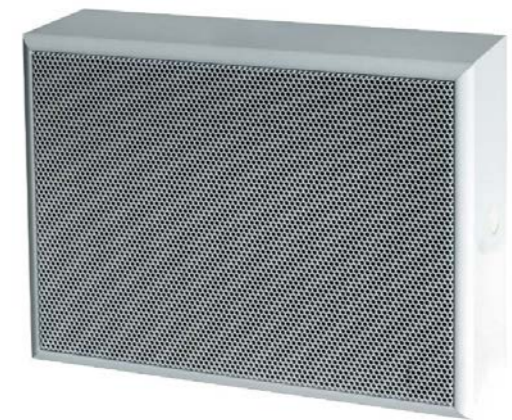
EN 54 24

WMS-R-06W-W

6 Watts Wall Mount Loudspeaker IP54

Applications

Public Address/Voice Alarm and Background Music		
Power (100V)	Sensitivity	Frequency Range
6/3/1.5W Tapping	EN54-24, 1W/1m = 93 dB	197 - 21,900 Hz
Dimension	Dispersion	Maximum cable cross section
253x194x82mm	-6dB, 500Hz = h/v 180°, -6dB, 1kHz = h/v 160°	8mm ²



EN 54 24

WMS-R-06W-M

6 Watts Wall Mount Loudspeaker Metal

Applications

Public Address/Voice Alarm and Background Music		
Power (100V)	Sensitivity	Frequency Range
6/3/1.5W Tapping	EN54-24, 1W/1m = 94 dB	170 - 18,500 Hz
Dimension	Dispersion	Maximum cable cross section
252x192x81mm	-6dB, 500Hz = h/v 180°, -6dB, 1kHz = h/v 160°	8mm ²



EN 54 24

WMS-S-06W-US-ABS

6 Watts Wall Mount Loudspeaker

Applications

Public Address/Voice Alarm and Background Music		
Power (100V)	Sensitivity	Frequency Range
6/3/1.5W Tapping	EN54-24, 1W/1m = 79 dB	210 - 21,800 Hz
Dimension	Dispersion	Maximum cable cross section
252x182x70mm	-6dB, 500Hz = h/v 180°, -6dB, 4kHz = h/v 89°	8 mm ²



CSST-10W-200

10 Watts Inwall Mount Loudspeaker

Applications

Public Address/ Voice Alarm and Background Music		
Power (100V)	Sensitivity	Frequency Range
10/5/2.5W Tapping	EN54-24, 1W/1m = 93.9 dB	94 - 18,900 Hz
Dimension	Dispersion	Maximum cable cross section
220x306x82mm	-6dB, 500Hz = h/v 180°, -6dB, 4kHz = h/v 55°/60°	8 mm ²



HS-10W-ABS

10 Watts Horn Loudspeaker (IP66)
(Impact resistant housing)

Applications

Public Address/Voice Alarm		
Power (100V)	Sensitivity	Frequency Range
10/5/2.5/1.25W Tapping	(89 Hz – 11 kHz) EN54-24, 1W/1m = 95 dB	569 - 7,000 Hz
Dimension	Dispersion	Maximum cable cross section
142x256mm	-6dB, 500Hz = h/v 360°, -6dB, 4kHz = h/v 50°	8mm ²



EN 54 24

HS-30W-ABS

30 Watts Horn Loudspeaker (IP66)
(Impact resistant housing)

Applications

Public Address/Voice Alarm		
Power (100V)	Sensitivity	Frequency Range
30/20/10/5W Tapping	(89 Hz – 11 kHz) EN54-24, 1W/1m = 97.9 dB	592 - 6,900 Hz
Dimension	Dispersion	Maximum cable cross section
235x351mm	-6dB, 500Hz = h/v 155°, -6dB, 4kHz = h/v 35°	8mm ²



EN 54 24

HS-50W-C-AL

50 Watts Horn Loudspeaker

Applications

Public Address/ Voice Alarm		
Power (100V)	Sensitivity	Frequency Range
50/30/15W Tapping	Pmax/1m = 130.1 dB	300 - 3,000 Hz
Dimension	Dispersion	
505x335mm	-10dB = h/v 100°	



ESS-2200 A

Emergency-Surface-System

Applications

Public Address/Voice Alarm and Background Music		
Power (100V)	Sensitivity	Frequency Range
100/60/30W Tapping	EN54-24, 1W/4m = 96 dB	280 - 9,000 Hz
Dimension	Dispersion	Maximum cable cross section
1,228x832x413mm	-6dB, 500Hz = h/v 58°/35°, -6dB, 1kHz = h/v 35°/25°	-



EN 54 24

PB-3150WA

150 Watts Coaxial Horn Loudspeaker (IP66)
Color: Black/White

Applications

Public Address/Voice Alarm and Background Music		
Power (100V)	Sensitivity	Frequency Range
150/75/38W Tapping	(89 Hz – 11 kHz) EN54-24, 1W/4m = 84.7 dB, SPL 1W/1m, peak: 104 dB	90 - 19,000 Hz
Dimension	Dispersion	Maximum cable cross section
315x305x350mm	-6dB, 500Hz = h/v 170°/180°, -6dB, 4kHz = h/v 85°/70°	4.9mm ²



EN 54 24

PB-3250WA

250 Watts Coaxial Horn Loudspeaker (IP66)
Color: Black/White

Applications

Public Address/Voice Alarm and Background Music		
Power (100V)	Sensitivity	Frequency Range
250/125/63W Tapping	(89 Hz – 11 kHz) EN54-24, 1W/4m = 86 dB, SPL 1W/1m, peak: 103 dB	85 - 19,000 Hz
Dimension	Dispersion	Maximum cable cross section
390x425x418mm	-6dB, 500Hz = h/v 130°/135°, -6dB, 4kHz = h/v 85°/60°	4.9mm ²



EN 54 24

WMS-50W-ABS

50 Watts Two-way Wall Mount (Monitor) Loudspeaker (IP65)

Applications

Public Address/Voice Alarm and Background Music		
Power (100V)	Sensitivity	Frequency Range
50/25/12.5/6.25W Tapping	(89 Hz – 11 kHz) EN54-24, 1W/1m = 84.8 dB	52 - 24,000 Hz, Frequency Response: 48 - 25,000 Hz
Dimension	Dispersion	Maximum cable cross section
326x202x192mm	-6dB, 500Hz = h/v 360°, -6dB, 4kHz = h/v 80°/25°	4.9mm ²
ABS material housing		



EN 54 24

WMS-30W-ABS

30 Watts Two-way Wall Mount (Monitor) Loudspeaker (IP65)

Applications

Public Address/Voice Alarm and Background Music		
Power (100V)	Sensitivity	Frequency Range
30/15/7.5W Tapping	(89 Hz – 11 kHz) EN54-24, 1W/1m = 82.4 dB	60 - 24,000 Hz
Dimension	Dispersion	Maximum cable cross section
260x160x152mm	-6dB, 500Hz = h/v 360°, -6dB, 4kHz = h/v 120°/40°	2.5mm ²
ABS material housing		



EN 54 24

CLS-20W-AL

20 Watts Column Loudspeaker (IP66)

Applications

Public Address/Voice Alarm and Background Music		
Power (100V)	Sensitivity	Frequency Range
20/15/10/5 W Tapping	(89 Hz – 11 kHz) EN54-24, 1W/1m = 92.5 dB	217 - 16,900 Hz
Dimension	Dispersion	Maximum cable cross section
510x100x92mm	-6dB, 500Hz = h/v 360°/124°, -6dB, 4kHz = h/v 86°/14°	8mm ²
Aluminium Finish material		



EN 54 24

CLS-30W-AL

30 Watts Column Loudspeaker (IP66)

Applications

Public Address/Voice Alarm and Background Music		
Power (100V)	Sensitivity	Frequency Range
30/15/7.5W Tapping	(89 Hz – 11 kHz) EN54-24, 1W/1m = 93 dB	230 - 16,500 Hz
Dimension	Dispersion	Maximum cable cross section
700x100x92mm	-6dB, 500Hz = h/v 360°/114°, -6dB, 4kHz = h/v 85°/13°	8mm ²
Aluminium Finish material		



EN 54 24

CLS-50W-AL

50 Watts Column Loudspeaker (IP66)

Applications

Public Address/ Voice Alarm and Background Music		
Power (100V)	Sensitivity	Frequency Range
50/30/15/7.5 W Tapping	(89 Hz – 11 kHz) EN54-24, 1W/1m = 94.7 dB	250 - 15,800 Hz
Dimension	Dispersion	Maximum cable cross section
971x100x92mm	-6dB, 500Hz = h/v 360°/73°, -6dB, 4kHz = h/v 98°/6°	8mm ²
Aluminium Finish material		



EN 54 24

PS-20W-AL

20 Watts Aluminium type Projector Loudspeaker (IP65)

Applications

Public Address/ Voice Alarm and Background Music		
Power (100V)	Sensitivity	Frequency Range
20/15/10/5W Tapping	(89 Hz – 11 kHz) EN54-24, 1W/1m = 92.3 dB	800 - 16,700 Hz Frequency Response 150 - 20,000 Hz
Dimension	Dispersion	Maximum cable cross section
140x163mm	-6dB, 500Hz = h/v 360°, -6dB, 4kHz = h/v 55°	8mm ²
Aluminium finish material		



EN 54 24

PS-20W-N-PL

20 Watts Projector Loudspeaker (IP65)

Applications

Public Address/ Voice Alarm and Background Music		
Power (100V)	Sensitivity	Frequency Range
20/10/5 W Tapping	(89 Hz – 11 kHz) EN54-24, 1W/4m = 76.4 dB	142 - 14,300 Hz Frequency Response 112 - 15,800 Hz
Dimension	Dispersion	Maximum cable cross section
169x283.5mm	-6dB, 500Hz = h/v 360°, -6dB, 4kHz = h/v 80°/85°	8mm ²
ABS material finish		



EN 54 24

BIPS-10W-AL

10 Watts Bidirectional Projector Loudspeaker (IP65)

Applications

Public Address/ Voice Alarm and Background Music		
Power (100V)	Sensitivity	Frequency Range
10/6/3/1.5 W Tapping	(89 Hz – 11 kHz) EN54-24, 1W/1m = 89.6 dB	237 - 12,400 Hz Frequency Response 79 - 17,500 Hz
Dimension	Dispersion	Maximum cable cross section
201x 176x160 mm	-6dB, 500Hz = h/v 2x130°, -6dB, 4kHz = h/v 2x75°	8mm ²
Aluminium housing		



EN 54 24

SS-20W-ABS

20 Watts Hemisphere Two-way Loudspeaker (IP65)

Applications

Public Address/ Voice Alarm and Background Music		
Power (100V)	Sensitivity	Frequency Range
20/10/5/2.5W Tapping	(89 Hz – 11 kHz) EN54-24, 1W/4m = 71.9 dB	80 - 20,000 Hz
Environment:	Dispersion	Maximum cable cross section
Indoor/outdoor	-6dB, 500Hz = h/v 360°, -6dB, 4kHz = h/v 86°	8mm ²



EN 54 24

SS-60W-ABS

60 Watts Hemisphere Two-way Loudspeaker (IP65)

Applications

Public Address/ Voice Alarm and Background Music		
Power (100V)	Sensitivity	Frequency Range
60/40/20/10W Tapping	(89 Hz – 11 kHz) EN54-24, 1W/1m = 80.5 dB	80 - 20,000 Hz
Environment	Dispersion	Maximum cable cross section
Indoor/outdoor	-6dB, 500Hz = h/v 180°, -6dB, 4kHz = h/v 81°	8mm ²



PB-3100WA

Stackable Array Loudspeaker (each array unit: 100 Watts)

Applications

Public Address/Voice Alarm and Background Music		
Power (100V)	Sensitivity	Frequency Range
100/50/25W Tapping Power (8 ohm) 100 Watts	(89 Hz – 11 kHz) EN54-24, 1W/4m = 74.3 dB	54 - 20,500 Hz
Dimension	Dispersion	Maximum cable cross section
341x192x245 mm	-6dB, 500Hz = h/v 160°/230°, -6dB, 4kHz = h/v 145°/68°	4 mm ²



EN 54 24

PLA-2861

120 Watts Wall Mount Professional Line Array

Applications

Professional Live Audio	
Power (100V)	Frequency Range
120W	150 - 20,000 Hz
Dimension	Environment
height 1 meter	IP55



LSFS-50W-AL

50 Watts Floor standing Loudspeaker

Applications

Background Music		
Power (100V)	Sensitivity	Frequency Range
50/12.5/25/W Tapping	1W/4m = 90.5 dB	120 - 16,000 Hz
Dimension	Dispersion	Environment
240(D)mm x 760(H)mm	-10dB = 360°	IP66



LSS-80W-BR-200/T

80 Watts Landscape and Inground Loudspeaker

Color: Dark Brown / Pearl

Applications

Background Music		
Power (100V)	Sensitivity	Frequency Range
80/40/20W Tapping	Pmax/1m, peak = 110 dB	42 -22,500 Hz full range mode (music) / 62 -22,500 Hz voice alarm mode (EN54 -24)
Dimension	Dispersion	Environment
390(D)mm x 450(H)mm	-6dB, 500Hz = h/v 360°/180°, -6dB, 4kHz = h/v 360°/80°	IP65



SWA-1200W

Active Subwoofer

Applications

Professional Audio		
Power(100V)	Sensitivity	Frequency Range
240V AC 50Hz/60Hz	1W/1m = 100 dB	40 - 250 Hz
Dimension	Distortion	Connection
450x456x370mm	Less than 0.02%	XLR/6.3mm jack socket parallel



References

Allianz Headquarters-Head office 4 High-Rise Buildings (Stuttgart), Altstadttring Traffic Tunnel (München), Bechtle Headquarters (Neckarsulm), Water Park Nautiland (Germany), Continental Headquarter (Hannover), Convention Center (Heidelberg), Da Vinci comprehensive school and Four Sport Halls (Potsdam), Fiducia + GAD IT AG - Atruvia Campus (Karlsruhe), Swimming Outdoor Pool (Rotten burg), Fujitsu High Rise Tower (Neckarsulm), Indoor Swimming Pool (Dachau), interpneu central warehouse (Speyer), District Hospital

(Vilsbiburg), Day Clinic ISAWA (Guben), Max Planck Institute for European legal history (Frankfurt), Oscar Paret School (Freiberg), PENNY logistics center (Kronau), Prinz Eugen Carre Apartment Buildings (Munich), Quartier hoch 4 High Rise Tower (Mannheim), RECARO Customer Center (Schwäbisch), ROFA Ice Rink (Rosenheim), Bayreuth City Hall (Bayreuth), Tunnel B10 (Karlsruhe), Tower at Mailänder Platz (Stuttgart), Stone Brewing (Berlin).



#zukunftsstark



Safety and Serenity in Sound

AUDEMO - SYSTEMS GmbH (Headquarter)

Schatzbogen 62 81829 Munchen

Tel.: +49 (0) 89 1 4 56 78 47 - 0, Fax: +49 (0) 89 1 4 56 78 47- 2900

info@audemo-systems.de, www.audemo-systems.de, www.audemo-systems.com

AUDEMO Middle East General Trading (Middle East & North Africa)

P.O.BOX: 43594, Abu Dhabi, United Arab Emirates

Tel : +971 (02)6263836, info@audemo-me.com

