



## PS-20W-N-PL

### 20 Watts Projector Loudspeaker



**EN 54 24**



- superb sound
- high-impact ABS plastic
- BS 5839



EN 54-24:2008  
Ref. Nr.: 021-32  
ID-Code: SAA-LS32  
0068-CPR-192/2023

AUDEMO-SYSTEMS GmbH Schatzbogen 62  
81829 München, Germany

CE-Symbol gemäß Richtlinie 93/68EWG

#### APPLICATION

- Public Address and Voice Alarm
- Background Music
- Audio Visual

#### AREA OF USE

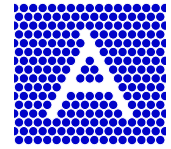
- Health
- Education
- Retail
- Hospitality
- Stadiums
- Transportation
- Theme parks
- Military

#### OVERVIEW

The 20W design speaker with an amazing concave shape is equipped with a 130mm full-range speaker and a 100V transformer with 3 power adjustments. Acoustically the design loudspeaker convinces at all levels. Thanks to a smart phase-shifting and a high-quality midrange resonator, the speaker offers a sound characteristic that is matching a 2-way system. In addition, the very wide dispersion ensures a comprehensive sound.

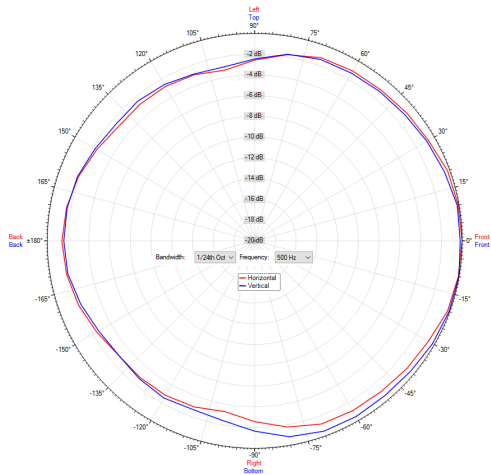
A robust, ABS plastic housing in RAL9016 and a stable aluminium mounting bracket guarantee a durable installation. The cable is fed via a cable gland (M12), for larger cable sizes the rear cable opening can be used. The integrated 2-pole ceramic block and thermal fuse as well as the moisture impregnation of the loudspeaker ensure additional safety.

The speaker is compliant with the British Standard BS 5839, Part 8.

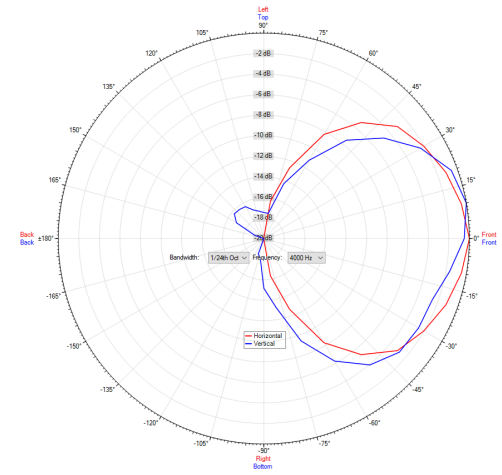


**POLAR DIAGRAMS**

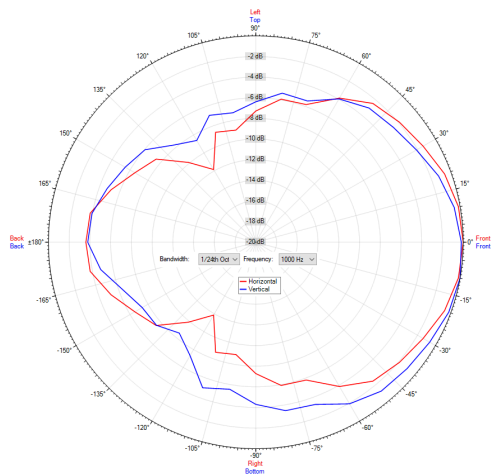
**Polar Diagram 500Hz**



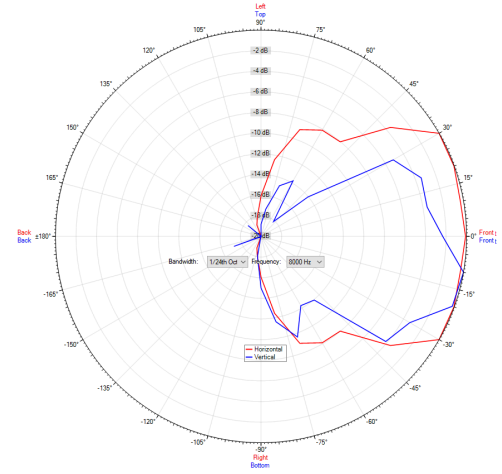
**Polar Diagram 4000Hz**



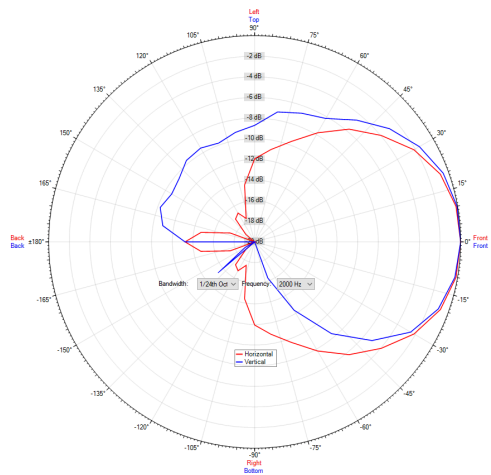
**Polar Diagram 1000Hz**

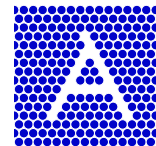


**Polar Diagram 8000Hz**



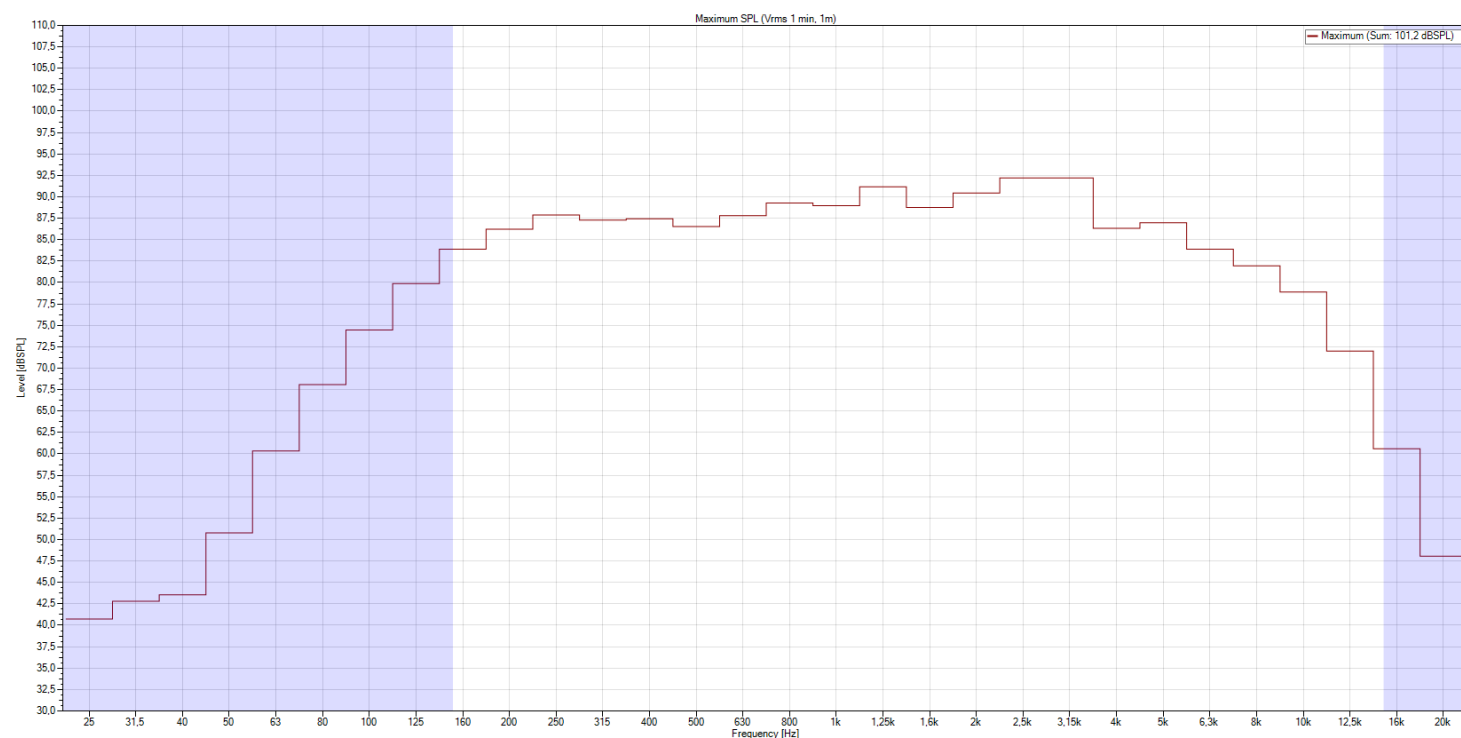
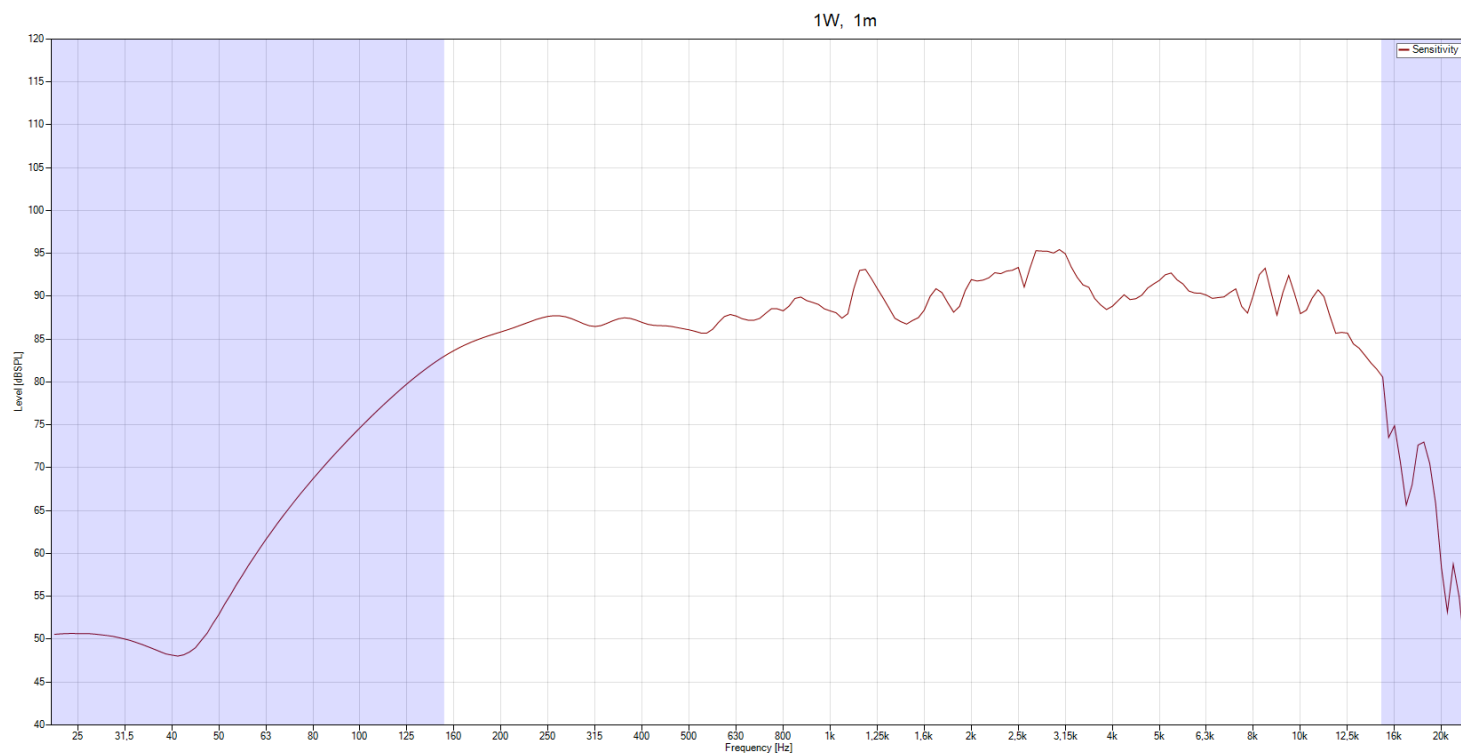
**Polar Diagram 2000Hz**

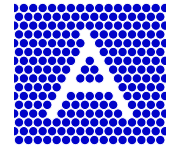




## FREQUENCY RESPONSE DIAGRAMS

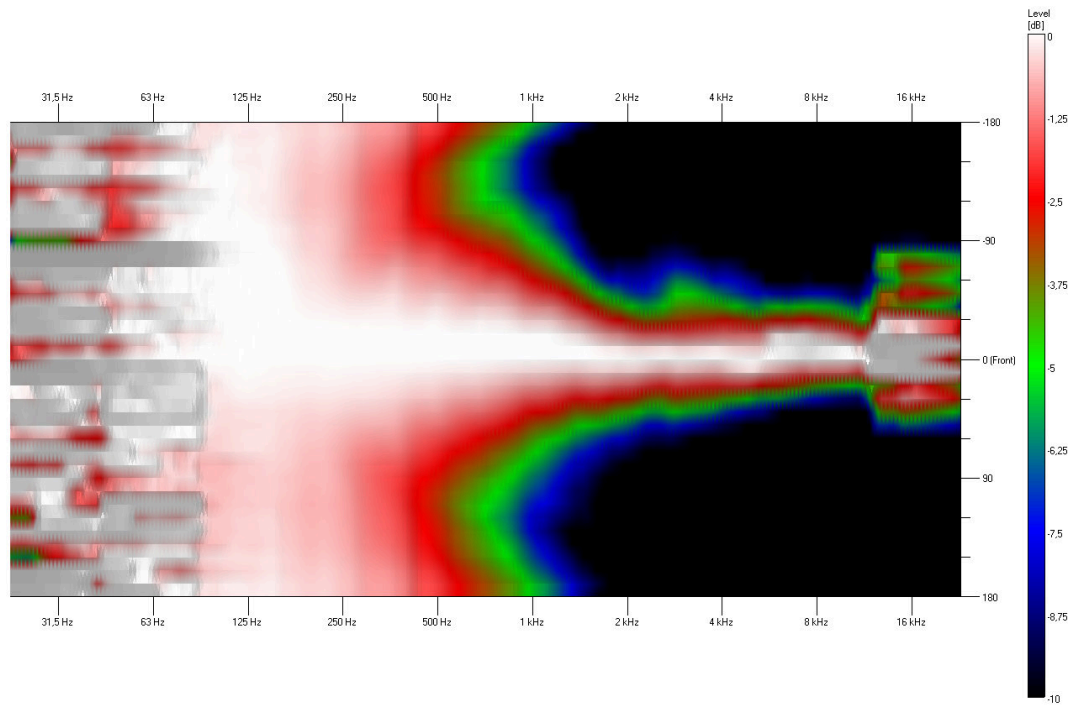
### Sensitivity



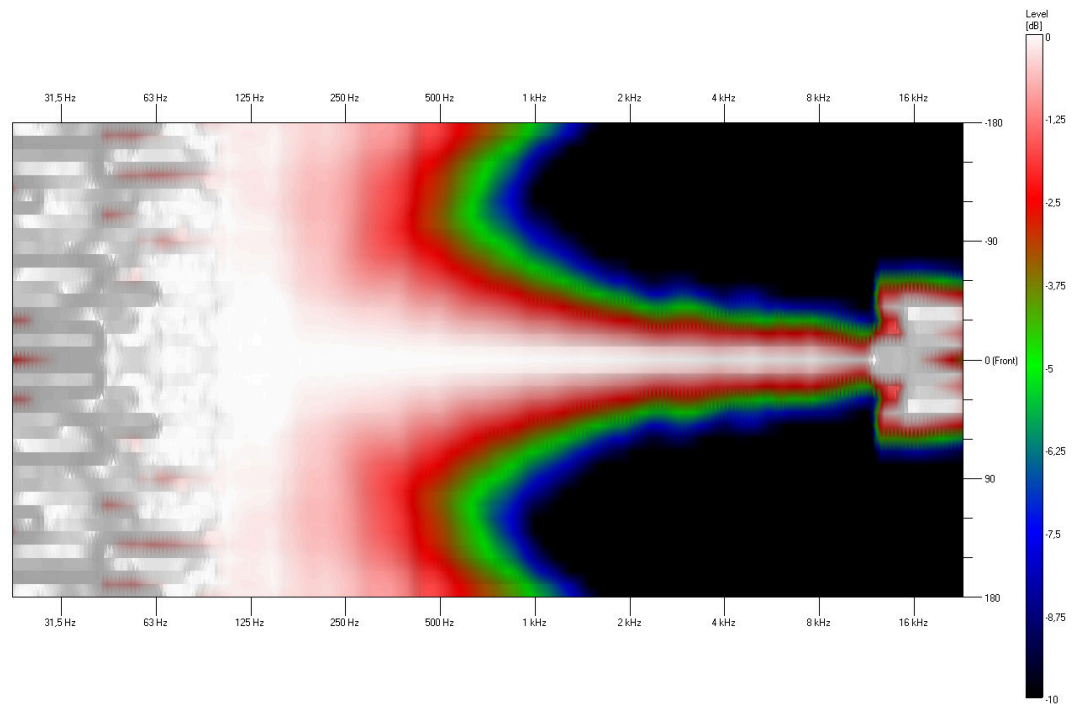


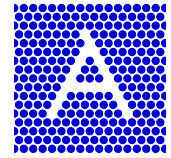
ISOBAR

Vertical

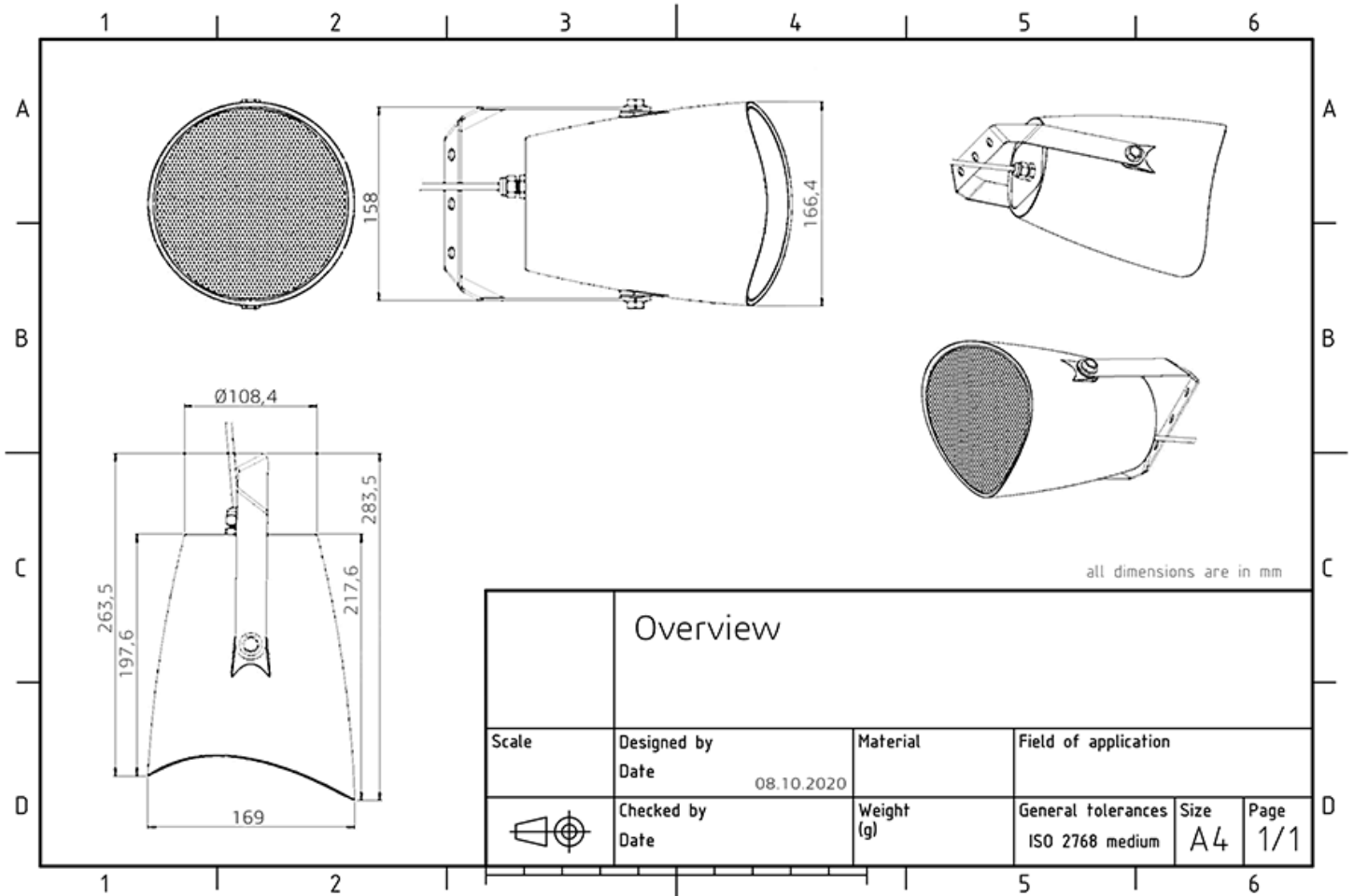


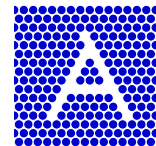
Horizontal





## TECHNICAL DIAGRAMS





## TECHNICAL DATA (ELECTRICAL)

Description	PS-20W-N-PL
Power	20/10/5 W
Impedance (100V)	500/1000/2000 ohm
Frequency Range	142 - 14.300 Hz
Frequency Response	112 - 15.800 Hz
Sensitivity, IEC268-5, 1W/1m	92,0 dB
Sensitivity EN54-24, Pmax/4m	88,0 dB
Sensitivity EN54-24, 1W/4m	76,4 dB
Sensitivity 1W/1m @ 1KHz	89 dB
Dispersion -6dB, 500Hz	h/v 360° / 360°
Dispersion -6dB, 1KHz	h/v 155° / 220°
Dispersion -6dB, 2KHz	h/v 95° / 85°
Dispersion -6dB, 4KHz	h/v 80° / 85°

## TECHNICAL DATA (MECHANICAL)

Dimensions	169x 283,5mm
IP Rating	IP65
Weight (net)	1,76kg
Temperature range	-25 / +70 C°
Mounting	Mounting bracket
Connector	2-pin ceramic block
Maximum cable cross section	3,2 mm
Max. cable cross section loop	8mm <sup>2</sup>
Colour	RAL 9016

### All rights reserved.

Information contained in this document is believed to be accurate, however no representation or warranty is given and Audemo-systems in Germany assumes no liability with respect to the accuracy of such information.



Member of the ZVEI - Central Association  
for the Electrical Engineering and Electrical  
Industry eV Safety Association



### AUDEMO - SYSTEMS GmbH (Headquarter)

Schatzbogen 62 81829 Munchen  
Tel.: +49 (0) 89 1 4 56 78 47 - 0, Fax: +49 (0) 89 1 4 56 78 47- 2900  
info@audemo-systems.de, www.audemo-systems.de