



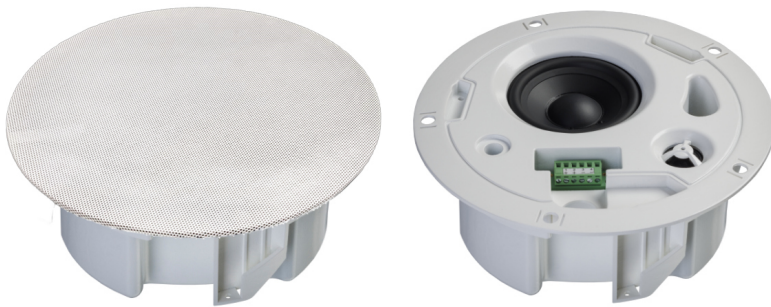
CSFLD-30W-130-BR

30 Watts Ceiling loudspeaker



EN 54 24

- 2-way system
- thermal fuse
- magnetic fastening of grille



EN 54-24:2008
Ref. Nr.: 018-15
ID-Code: SAA-LS18
0068-CPR-XXXX

AUDEMO-SYSTEMS GmbH Schatzbogen 62
81829 München, Germany

CE-Symbol gemäß Richtlinie 93/68EWG

APPLICATION

- Public Address and Voice Alarm
- Background Music
- Audio Visual

AREA OF USE

- Health
- Education
- Retail
- Hospitality
- Stadiums
- Transportation
- Theme parks
- Military

OVERVIEW

2-Way ceiling speaker with fire dome for voice alarm applications certified EN 54-24, suitable for voice announcements and background music with excellent sound quality in buildings. The 30W powered speaker is equipped with a 130mm 2-way system featuring a high-quality tweeter and a 100V transformer with 4 power adjustments. Low-impedance operation is also possible. The impact-resistant plastic housing in RAL 9016 guarantees long-term durability.

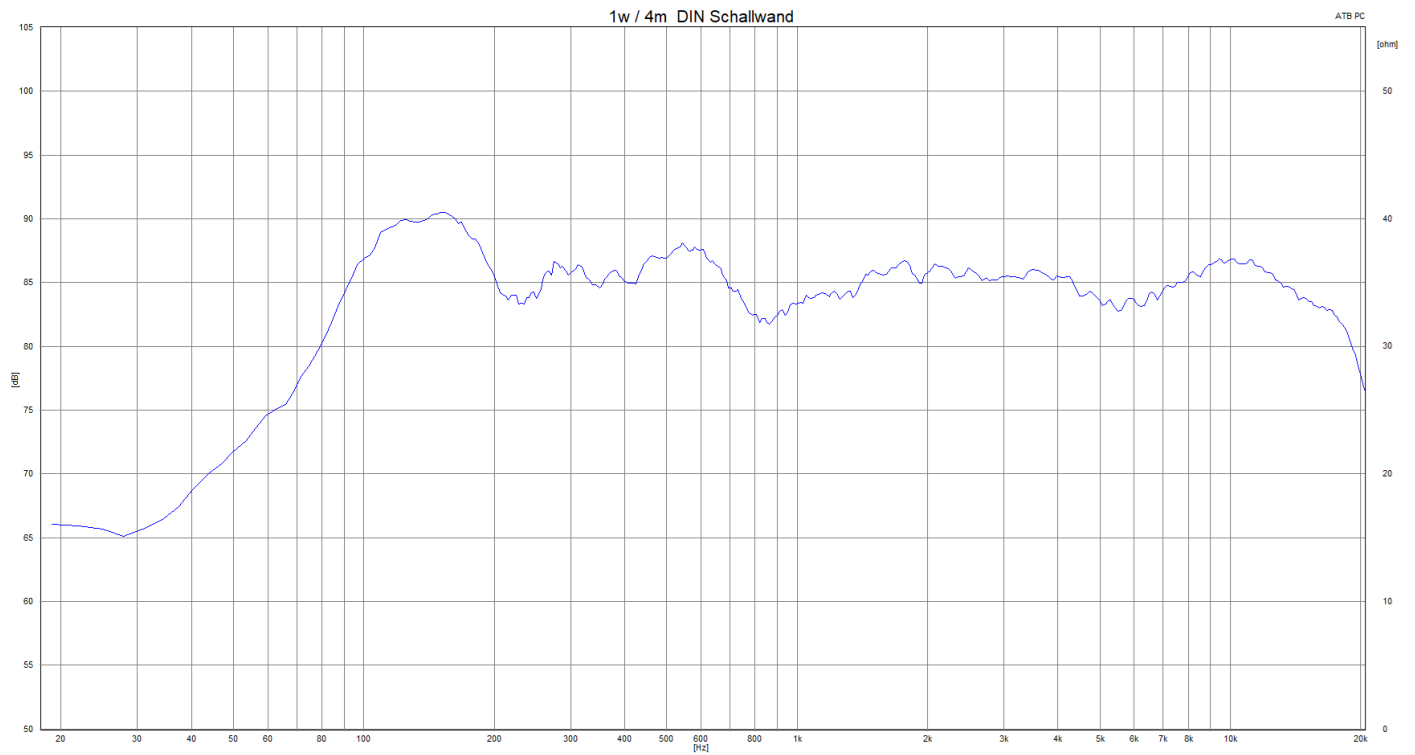
Thanks to an innovative magnetic fastening, the finely perforated speaker grille can be removed quickly and e.g. replaced by a grille with a different colour, even after the installation.

A thermal fuse provides additional safety. The speaker chassis is impregnated against dampness. Protection class IP 21C secures the speaker against the risks of environmental influences.

Fast and easy installation via a screw mounting system.

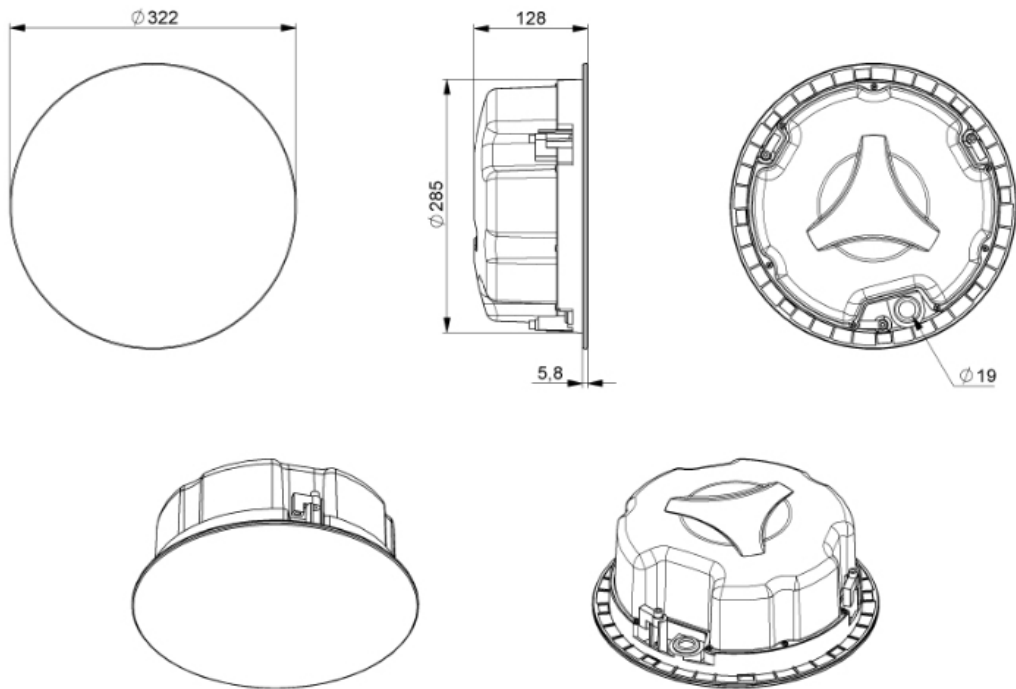


FREQUENCY RESPONSE DIAGRAM

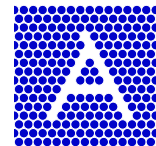




TECHNICAL DIAGRAMS



all dimensions are in mm



TECHNICAL DATA (ELECTRICAL)

Description	CSFLD-30W-130-BR
Power	30/15/7.5/3.75 W
Impedance (100V)	333/667/1333/2666 ohm
Frequency Range	62 - 23.700 Hz
Frequency Response	51 - 24.600 Hz
Sensitivity , IEC268-5, 1W/1m	82,2 dB
Sensitivity , EN54-24, Pmax./4m	85,8 dB
Sensitivity , rated noise power / 4m	94,3 dB
Sensitivity EN54-24, 1W/4m	70,2 dB
Sensitivity EN54-24, 1W/1m	82,2 dB
Dispersion -6dB, 500Hz	180°
Dispersion -6dB, 1KHz	180°
Dispersion -6dB, 2KHz	114°
Dispersion -6dB, 4KHz	61°

TECHNICAL DATA (MECHANICAL)

Dimensions	320x128 mm
IP Rating	IP21
Weight (net)	2,3 kg
Ceiling Cut-out	291 mm
Temperature range	-10 / +55 °C
Mounting	Screw system
Connector	4-pin screw terminal
Type A/B	A
IP Rating	IP21
Colour	RAL 9016

All rights reserved.

Information contained in this document is believed to be accurate, however no representation or warranty is given and Audemo-systems in Germany assumes no liability with respect to the accuracy of such information.



Member of the ZVEI - Central Association
for the Electrical Engineering and Electrical
Industry eV Safety Association



AUDEMO - SYSTEMS GmbH (Headquarter)

Schatzbogen 62 81829 Munchen
Tel.: +49 (0) 89 1 4 56 78 47 - 0, Fax: +49 (0) 89 1 4 56 78 47- 2900
info@audemo-systems.de, www.audemo-systems.de