



WMS-R-06W-M

6 Watts Metal Wall Mounted Cabinet Loudspeaker



EN 54 24

- All-metal construction
- Vandal-proof
- BS 5839



EN 54-24:2008
Ref. Nr.: 007-13
ID-Code: SAA-LS07
0068-CPR-204/2024

AUDEMO-SYSTEMS GmbH Schatzbogen 62
81829 München, Germany

CE-Symbol gemäß Richtlinie 93/68EWG

APPLICATION

- Public Address and Voice Alarm
- Background Music
- Audio Visual

AREA OF USE

- Health
- Education
- Retail
- Hospitality
- Stadiums
- Transportation
- Theme parks
- Military

OVERVIEW

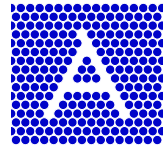
This speaker is the best choice for sensitive installations like in prisons or industrial projects where plastic and wooden materials cannot be used.

The 6W powered speaker is equipped with a 165mm full-range loudspeaker chassis and a 100V transformer with 3 power adjustments. The extremely stable metal housing in RAL 9010 with corrosion-resistant powder coating, offers tremendous resilience in unobtrusive design. For additional reliability, a 2 pin-ceramic block, a thermal fuse is provided and the speaker chassis is impregnated against wetness..

The speaker is also secured with protection class IP 21C against the risks of environmental influences.

The speaker is also compliant with the British Standard BS 5839, Part 8.

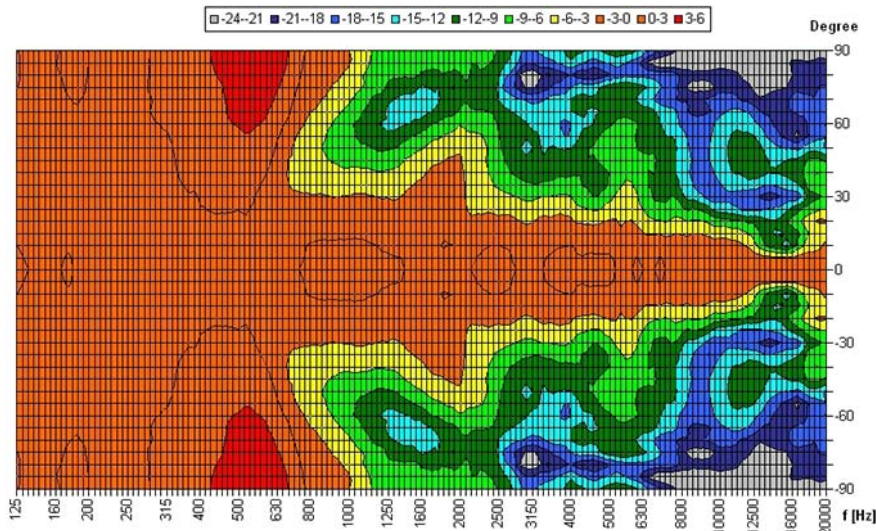
Quick and easy mounting with screws.



POLAR DIAGRAMS

Horizontal Isobars

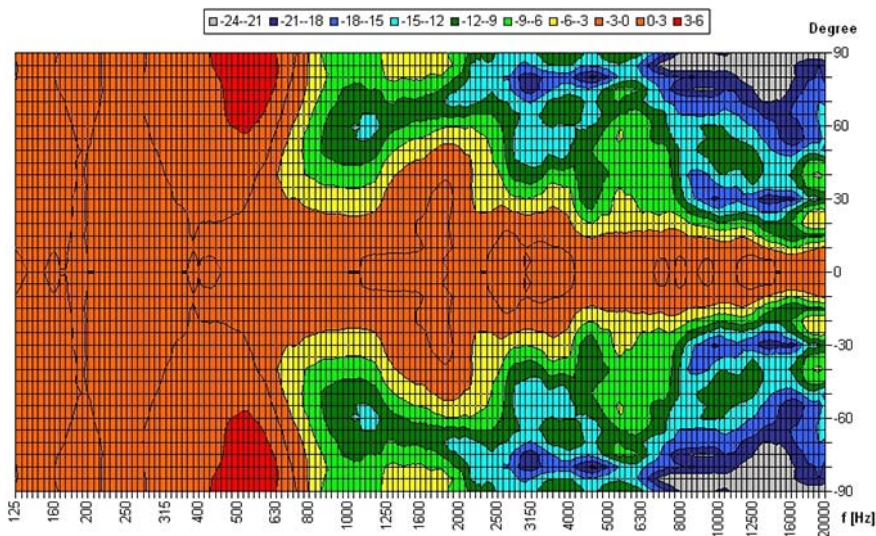
Copyright by Four-Audio GmbH & Co KG Licensed to AAC



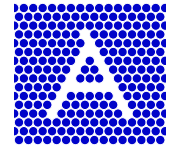
Parameters: Cyclic Move: 0° ; Symmetry: 0..+180 sym ; Freq.Smooth: 1/3 Oct ; Ang.Resol.: 5° ; Rel. to: 0° Axis 0°

Vertical Isobars

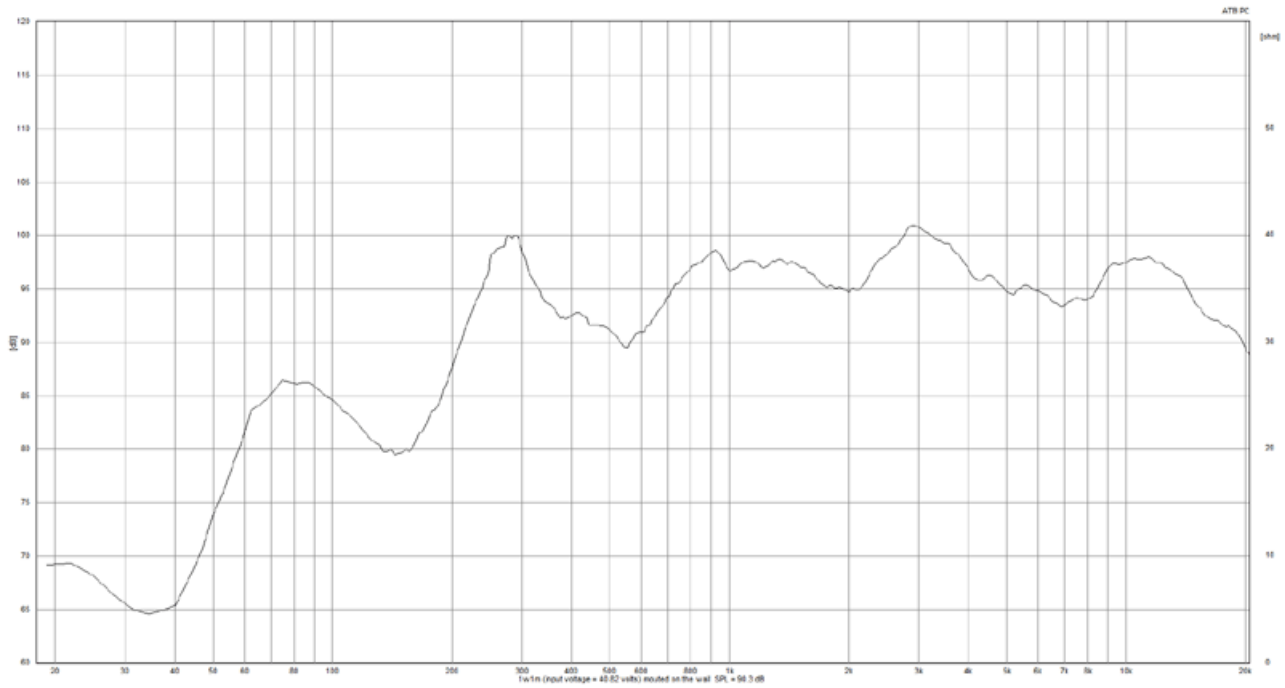
Copyright by Four-Audio GmbH & Co KG Licensed to AAC



Parameters: Cyclic Move: 0° ; Symmetry: 0..+180 sym ; Freq.Smooth: 1/3 Oct ; Ang.Resol.: 5° ; Rel. to: 0° Axis 0°

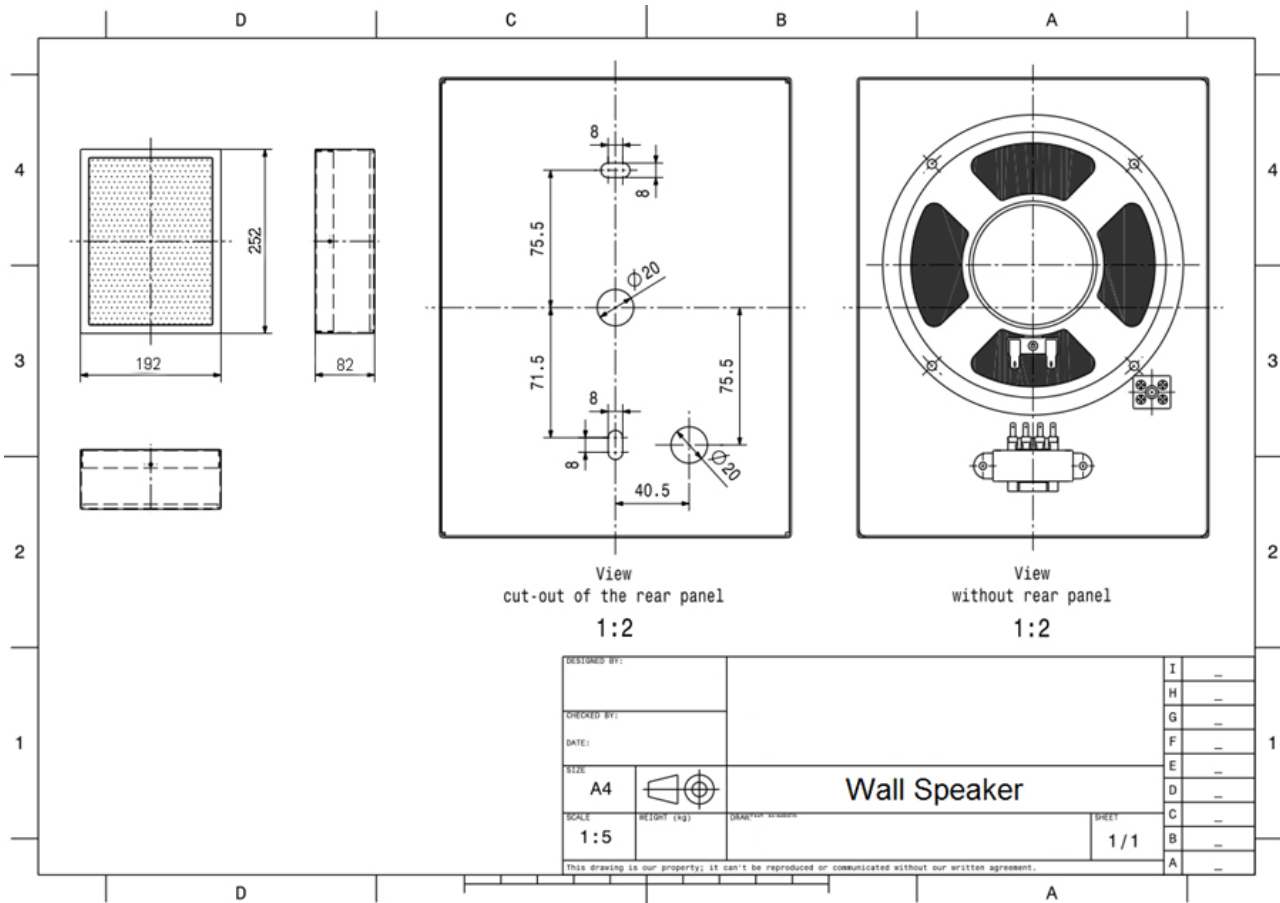


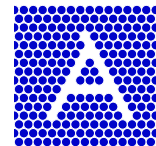
FREQUENCY RESPONSE DIAGRAMS





TECHNICAL DIAGRAMS





TECHNICAL DATA (ELECTRICAL)

Description	WMS-R-06W-M
Power	6/3/1,5 W
Impedance (100V)	1667 / 3333 / 6667 ohm
Frequency Range	170 - 18.500 Hz
Frequency Response	70 - 23.500 Hz
Sensitivity, IEC268-5, 1W/1m	94,0 dB
Sensitivity EN54-24, Pmax/4m	90,0 dB
Sensitivity EN54-24, 1W/4m	82,0 dB
Sensitivity EN54-24, 1W/1m	94,0 dB
Sensitivity 1W/1m @ 1KHz	99 dB
Dispersion -6dB, 500Hz	h=180° v=180°
Dispersion -6dB, 1KHz	h=160° v=160°
Dispersion -6dB, 2KHz	h=120° v=120°
Dispersion -6dB, 4KHz	h=76° v=76°

TECHNICAL DATA (MECHANICAL)

Dimensions	252x192x81 mm
IP Rating	IP21
Weight (net)	2,04 kg
Temperature range	-10 / +55 C°
Connector	2-pin ceramic block
Mounting	Screws
Connector	2-pin ceramic block
Terminal diameter	3,2 mm
Maximum cable cross section	8mm ²
Colour	RAL 9010

All rights reserved.

Information contained in this document is believed to be accurate, however no representation or warranty is given and Audemo-systems in Germany assumes no liability with respect to the accuracy of such information.

AUDEMO - SYSTEMS GmbH (Headquarter)

Schatzbogen 62 81829 Munchen
 Tel.: +49 (0) 89 1 4 56 78 47 - 0, Fax: +49 (0) 89 1 4 56 78 47- 2900
 info@audemo-systems.de, www.audemo-systems.de



Member of the ZVEI - Central Association
 for the Electrical Engineering and Electrical
 Industry eV Safety Association

