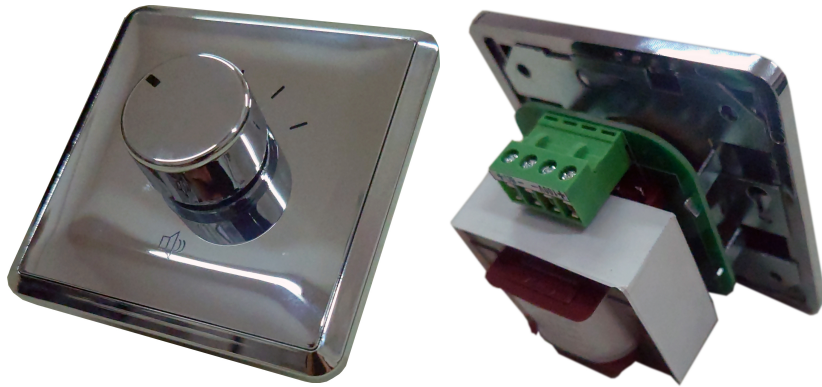




MCVC-10W-LZ

Volume Control Unit



- 10W
- 8 ohms



AUDEMO-SYSTEMS GmbH Schatzbogen 62
81829 München, Germany

CE-Symbol gemäß Richtlinie 93/68EWG

APPLICATION

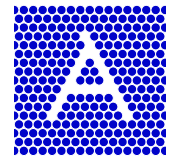
- Volume control

AREA OF USE

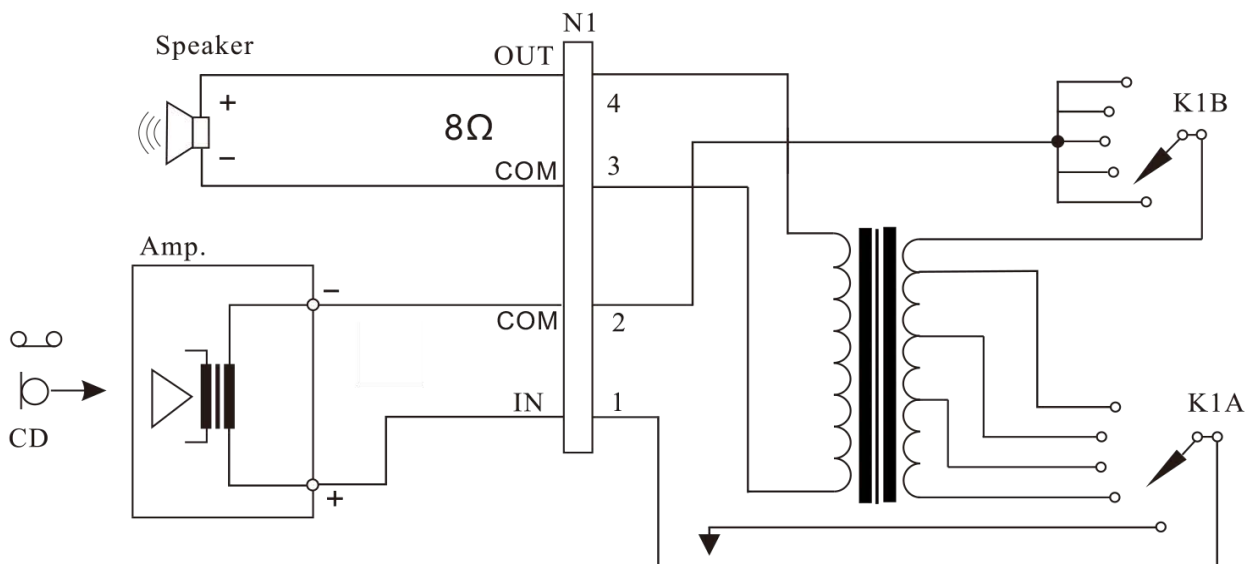
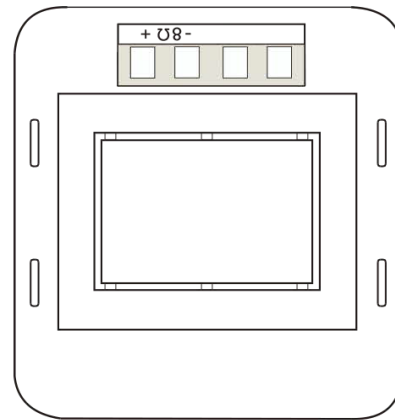
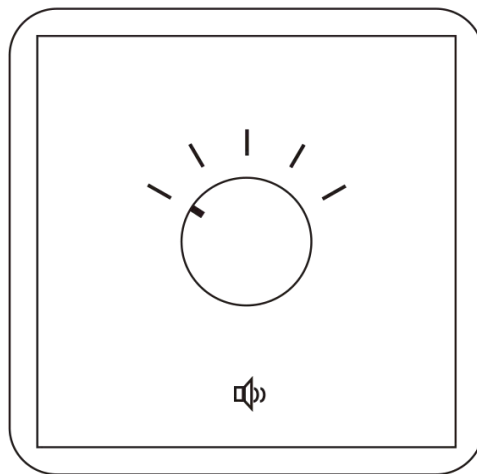
- Health • Education • Retail • Hospitality
- Stadiums • Transportation • Theme parks • Military

OVERVIEW

The MCVC-10W-LZ is a volume control with a rotary switch, in chrome colour for flush-mounting. The settings are 10 Watts / 8 ohm type with a relay.



TECHNICAL DIAGRAMS





TECHNICAL DATA (ELECTRICAL)

| | |
|------------------|-------------|
| Description | MCVC-10W-LZ |
| Rated Power | 10W |
| Output impedance | 8 ohms |
| Size | 87X87X48mm |

All rights reserved.

Information contained in this document is believed to be accurate, however no representation or warranty is given and Audemo-systems in Germany assumes no liability with respect to the accuracy of such information.

AUDEMO - SYSTEMS GmbH (Headquarter)

Schatzbogen 62 81829 Munchen
Tel.: +49 (0) 89 1 4 56 78 47 - 0, Fax: +49 (0) 89 1 4 56 78 47- 2900
info@audemo-systems.de, www.audemo-systems.de



Member of the ZVEI - Central Association
for the Electrical Engineering and Electrical
Industry eV Safety Association

