


CLS-50W-AL

50 Watts Column Loudspeaker

EN 54 24



- Aluminium housing
- Weather-proof
- BS 5839



EN 54-24:2008
Ref. Nr.: 006-13
ID-Code: SAA-LS06
0068-CPR-206/2024

AUDEMO-SYSTEMS GmbH Schatzbogen 62
81829 München, Germany

CE-Symbol gemäß Richtlinie 93/68EWG

- Public Address and Voice Alarm
- Background Music
- Audio Visual

AREA OF USE

- Health
- Education
- Retail
- Hospitality
- Stadiums
- Transportation
- Theme parks
- Military

OVERVIEW

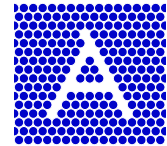
The 50W powered speaker is equipped with four 77mm full-range loudspeaker chassis and a 100V transformer with 4 power adjustments. The powder coated and shock-resistant aluminium housing in RAL 9006 guarantees long-term stability. For additional reliability, a 2 pin-ceramic block, a thermal fuse is provided and the speaker chassis is impregnated against wetness. Furthermore sturdy cable glands 2 x PG9 are also provided.

The speaker is also secured with the high protection class IP 66 against the security risks of environmental influences.

The speaker is compliant with the British Standard BS 5839, Part 8.

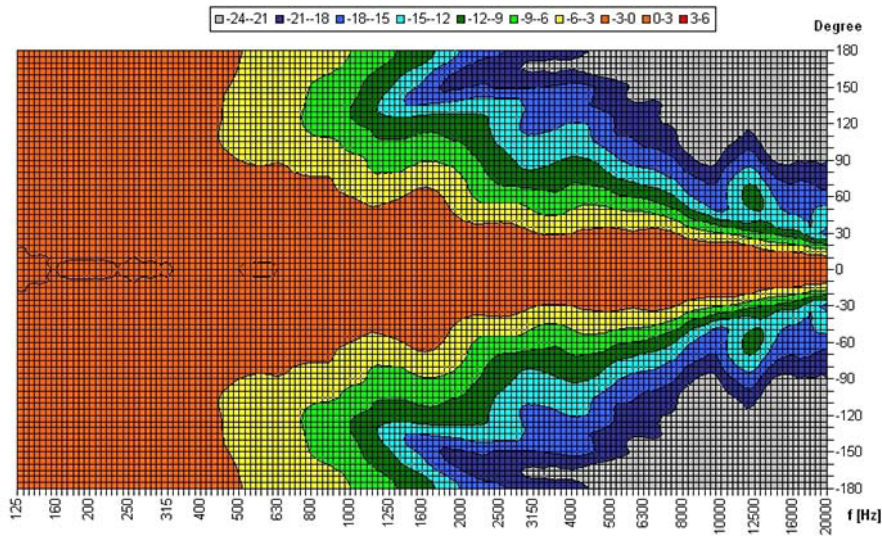
The easy mounting with the included swivel bracket provides much flexibility for the installation. Special paint of the speaker in 4-digit RAL- or NCS- colour available at extra cost.

The ball proof compliance of the sound column can only be guaranteed if a wall bracket is used. This can be ordered separately.



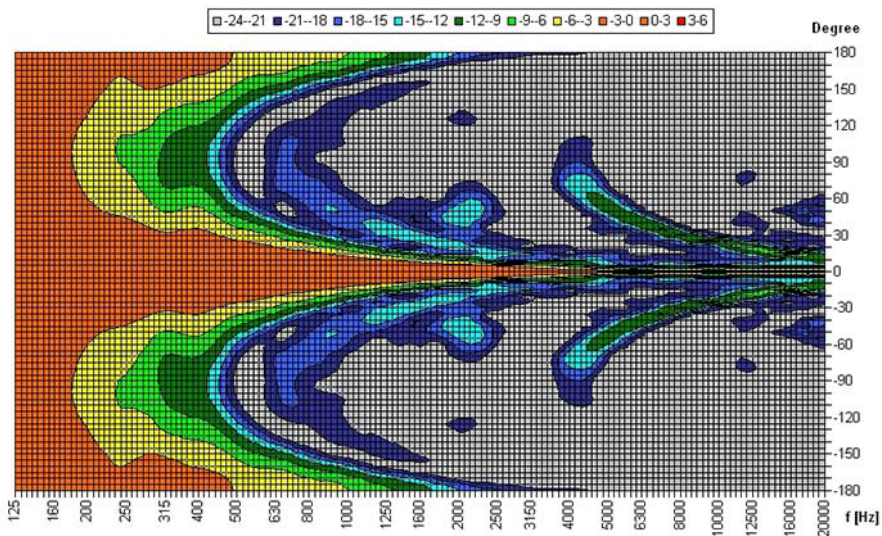
POLAR DIAGRAMS

Horizontal Isobars

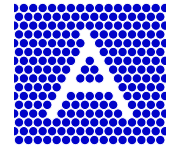


Parameters: Cyclic Move: 0° ; Symmetry: average sym ; Freq.Smooth: 1/3 Oct ; Ang.Resol: 5° ; Rel. to: 0° Axis 0°

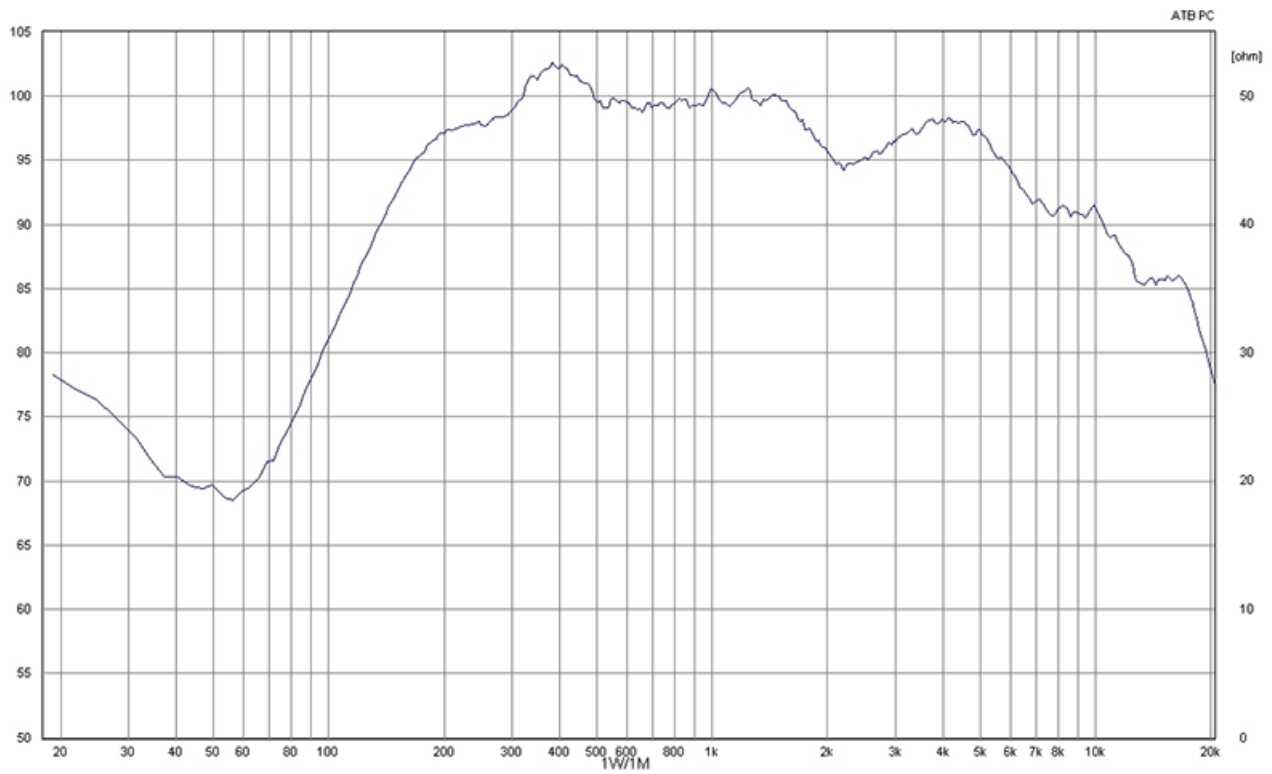
Vertical Isobars



Parameters: Cyclic Move: 0° ; Symmetry: average sym ; Freq.Smooth: 1/3 Oct ; Ang.Resol: 5° ; Rel. to: 0° Axis 0°

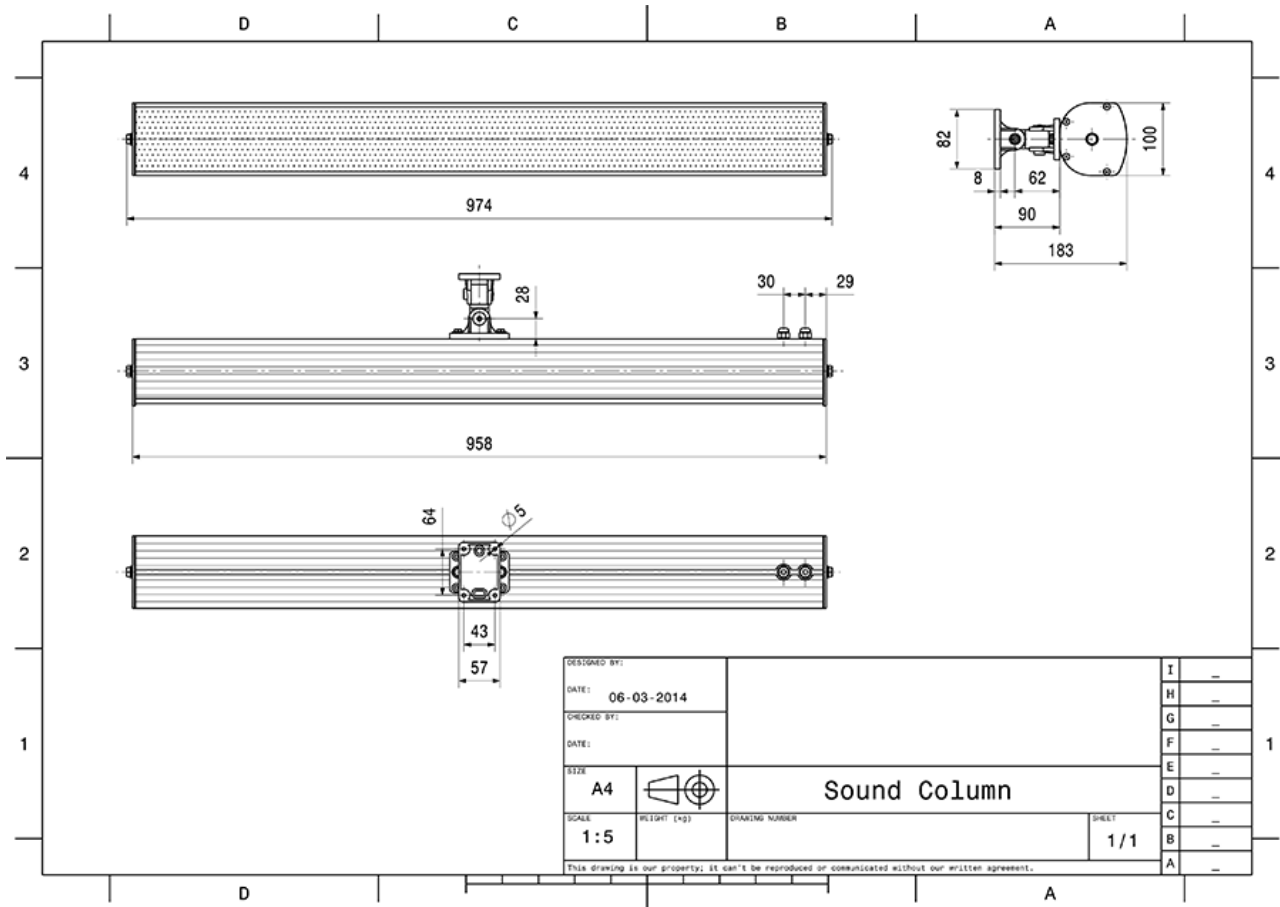


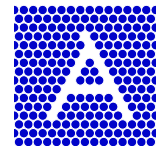
FREQUENCY RESPONSE DIAGRAMS





TECHNICAL DIAGRAMS





TECHNICAL DATA (ELECTRICAL)

Description	CLS-50W-AL
Power	50/30/15/7,5 W
Impedance (100V)	200/333/667/1333 ohm
Frequency Range	250 - 15.800 Hz
Frequency Response	110 - 18.000 Hz
Sensitivity , IEC268-5, 1W/1m	95 dB
Sensitivity , rated noise power / 4m	97,0 dB
Sensitivity EN54-24, 1W/4m	82,7 dB
Sensitivity EN54-24, 1W/1m	94,7 dB
Sensitivity 1W/1m @ 1KHz	99 dB
Dispersion -6dB, 500Hz	h360° / v73°
Dispersion -6dB, 1KHz	h186° / v33°
Dispersion -6dB, 2KHz	h173° / v17°
Dispersion -6dB, 4KHz	h98° / v6

TECHNICAL DATA (MECHANICAL)

Dimensions	971x100x92 mm
IP Rating	IP66
Weight (net)	5,20 kg
Temperature range	-25 / +70 C°
Mounting	Swivel bracket
Connector	2-pin ceramic block
Maximum cable cross section	8mm ²
Max. cable cross section loop	2x2mm ²
Colour	RAL 9006

All rights reserved.

Information contained in this document is believed to be accurate, however no representation or warranty is given and Audemo-systems in Germany assumes no liability with respect to the accuracy of such information.



Member of the ZVEI - Central Association
for the Electrical Engineering and Electrical
Industry eV Safety Association



AUDEMO - SYSTEMS GmbH (Headquarter)

Schatzbogen 62 81829 Munchen
Tel.: +49 (0) 89 1 4 56 78 47 - 0, Fax: +49 (0) 89 1 4 56 78 47- 2900
info@audemo-systems.de, www.audemo-systems.de