


## CLS-30W-AL

30 Watts Column Loudspeaker

**EN 54 24**



- Aluminium housing
- Weather-proof
- BS 5839



EN 54-24:2008  
Ref. Nr.: 006-13  
ID-Code: SAA-LS06  
0068-CPR-205/2024

---

AUDEMO-SYSTEMS GmbH Schatzbogen 62  
81829 München, Germany

CE-Symbol gemäß Richtlinie 93/68EWG

- Public Address and Voice Alarm
- Background Music
- Audio Visual

### AREA OF USE

- Health
- Education
- Retail
- Hospitality
- Stadiums
- Transportation
- Theme parks
- Military

### OVERVIEW

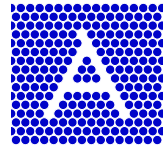
The 30W powered speaker is equipped with four 77mm full-range loudspeaker chassis and a 100V transformer with 4 power adjustments. The powder coated and shock-resistant aluminium housing in RAL 9006 guarantees long-term stability. For additional reliability, a 2 pin-ceramic block, a thermal fuse is provided and the speaker chassis is impregnated against wetness. Furthermore sturdy cable glands 2 x PG9 are also provided.

The speaker is also secured with the high protection class IP 66 against the security risks of environmental influences.

The speaker is compliant with the British Standard BS 5839, Part 8.

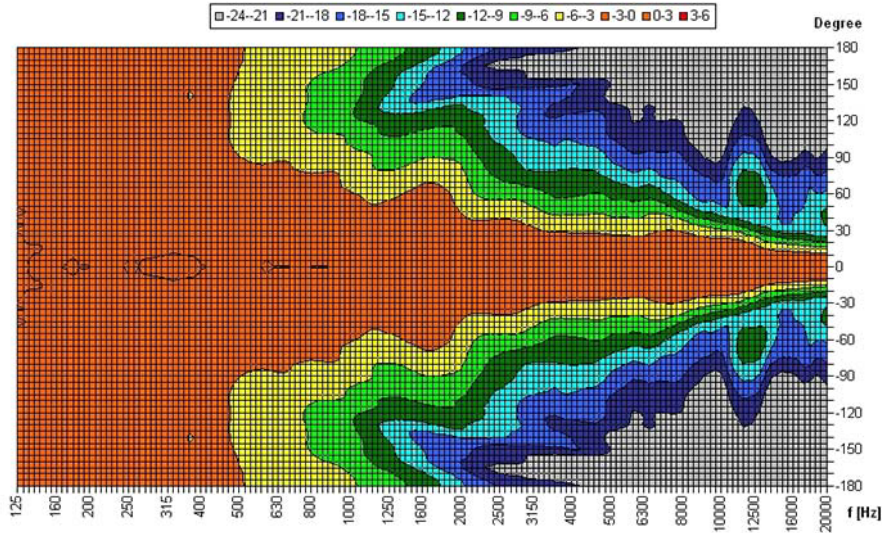
The easy mounting with the included swivel bracket provides much flexibility for the installation. Special paint of the speaker in 4-digit RAL- or NCS- colour available at extra cost.

The ball proof compliance of the sound column can only be guaranteed if a wall bracket is used. This can be ordered separately.



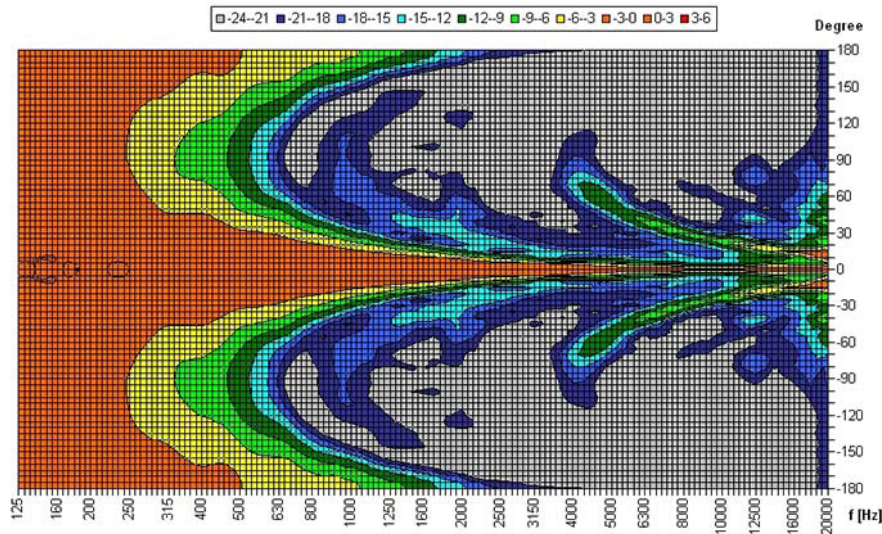
**POLAR DIAGRAMS**

**Horizontal Isobars**

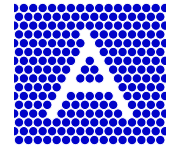


Parameters: Cyclic Move: 0° ; Symmetry: average sym ; Freq.Smooth: 1/3 Oct ; Ang.Resol.: 5° ; Rel. to: 0° Axis 0°

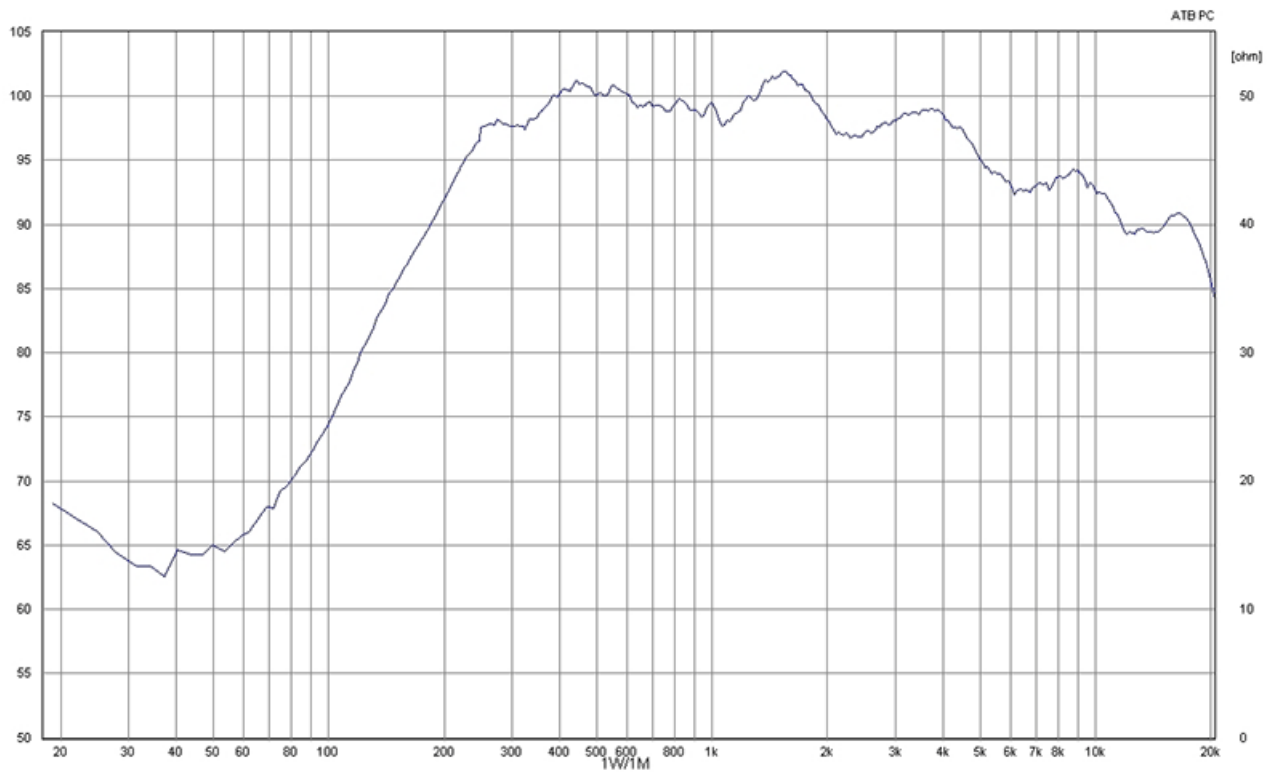
**Vertical Isobars**



Parameters: Cyclic Move: 0° ; Symmetry: average sym ; Freq.Smooth: 1/3 Oct ; Ang.Resol.: 5° ; Rel. to: 0° Axis 0°

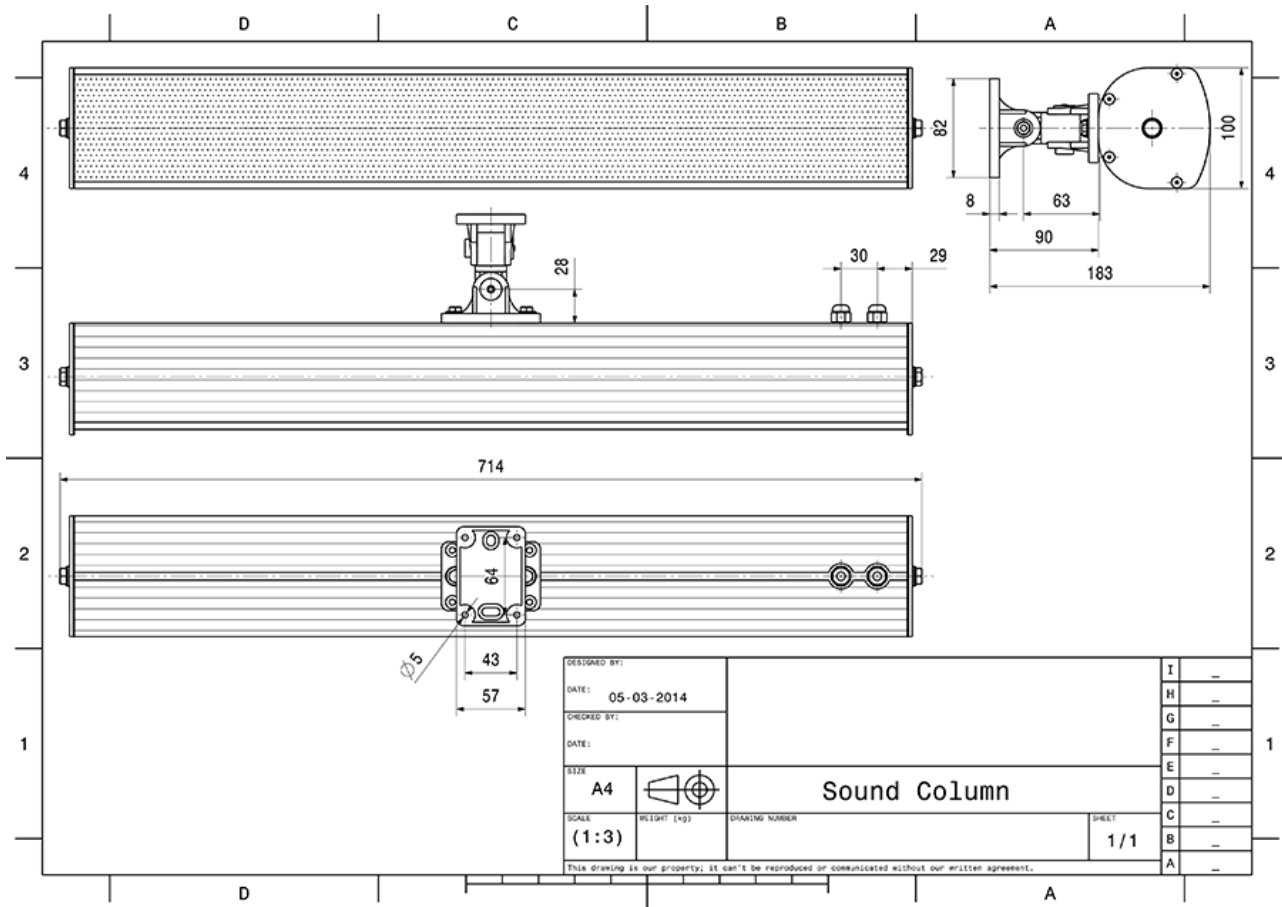


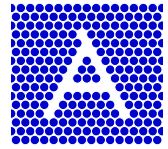
## FREQUENCY RESPONSE DIAGRAMS





**TECHNICAL DIAGRAMS**





## TECHNICAL DATA (ELECTRICAL)

Description	CLS-30W-AL
Power	30/15/7.5 W
Impedance (100V)	333/667/1333 ohm
Frequency Range	230 - 16.500 Hz
Frequency Response	137 - 23.500 Hz
Sensitivity IEC268-5, 1W/1m	93,0 dB
Sensitivity EN54-24, Pmax/4m	96,7 dB
Sensitivity EN54-24, 1W/4m	81,0 dB
Sensitivity EN54-24, 1W/1m	93,0 dB
Sensitivity 1W/1m @ 1KHz	96 dB
Dispersion -6dB, 500Hz	h360° / v114°
Dispersion -6dB, 1KHz	h190° / v50°
Dispersion -6dB, 2KHz	h160° / v26°
Dispersion -6dB, 4KHz	h85° / v13°

## TECHNICAL DATA (MECHANICAL)

Dimensions	700x100x92 mm
IP Rating	IP66
Weight (net)	3,80 kg
Temperature range	-25 / +70 C°
Mounting	Swivel bracket
Connector	2 x 2-pin ceramic block
Maximum cable cross section	8mm <sup>2</sup>
Terminal diameter	4,0 mm
Colour	RAL 9006

**All rights reserved.**

Information contained in this document is believed to be accurate, however no representation or warranty is given and Audemo-systems in Germany assumes no liability with respect to the accuracy of such information.



Member of the ZVEI - Central Association for the Electrical Engineering and Electrical Industry eV Safety Association



**AUDEMO - SYSTEMS GmbH (Headquarter)**

Schatzbogen 62 81829 Munchen  
Tel.: +49 (0) 89 1 4 56 78 47 - 0, Fax: +49 (0) 89 1 4 56 78 47- 2900  
info@audemo-systems.de, www.audemo-systems.de