



# BIPS-10W-AL

## Bidirectional Projector Loudspeaker



**EN 54 24**



- vandal-proof
- aluminium housing
- BS 5839

	EN 54-24:2008 Ref. Nr.: 003-14 ID-Code: SAA-LS14 0068-CPR-207/2024
	AUDEMO-SYSTEMS GmbH Schatzbogen 62 81829 München, Germany CE-Symbol gemäß Richtlinie 93/68EWG

### APPLICATION

- Public Address and Voice Alarm
- Background Music
- Audio Visual

### AREA OF USE

- Health
- Education
- Retail
- Hospitality
- Stadiums
- Transportation
- Theme parks
- Military

### OVERVIEW

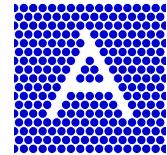
The 10W powered speaker is equipped with two 130mm full-range loudspeakers and a 100V line transformer with 4 power adjustments. A robust powder coated aluminum housing in RAL 9010, and a vandal-resistant feet ensure a permanent installation of this speaker. For additional reliability, a 2 pin-ceramic block and a thermal fuse is provided and the speaker chassis is impregnated against wetness.

The speaker is also secured with the high protection class IP 65 against the risks of

environmental influences.

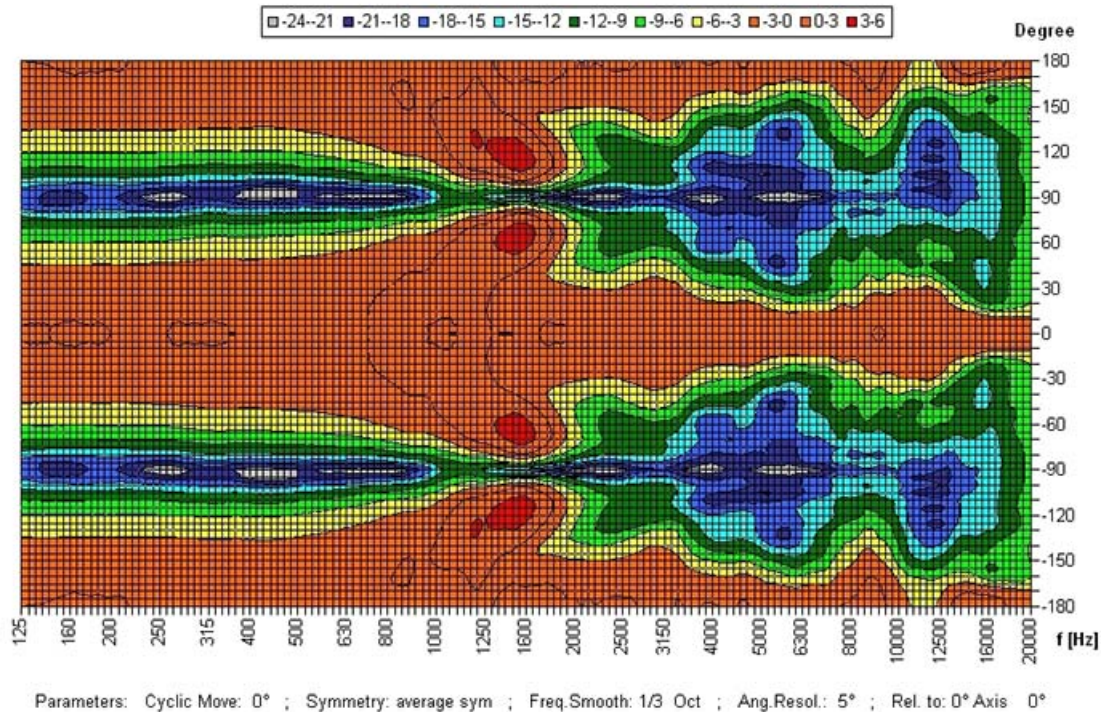
Perfectly suitable for the installation in corridors and hallways. The speaker is compliant with the British Standard BS 5839, Part 8.

Special paint of the speaker in 4-digit RAL- or NCS-colour available at extra cost.

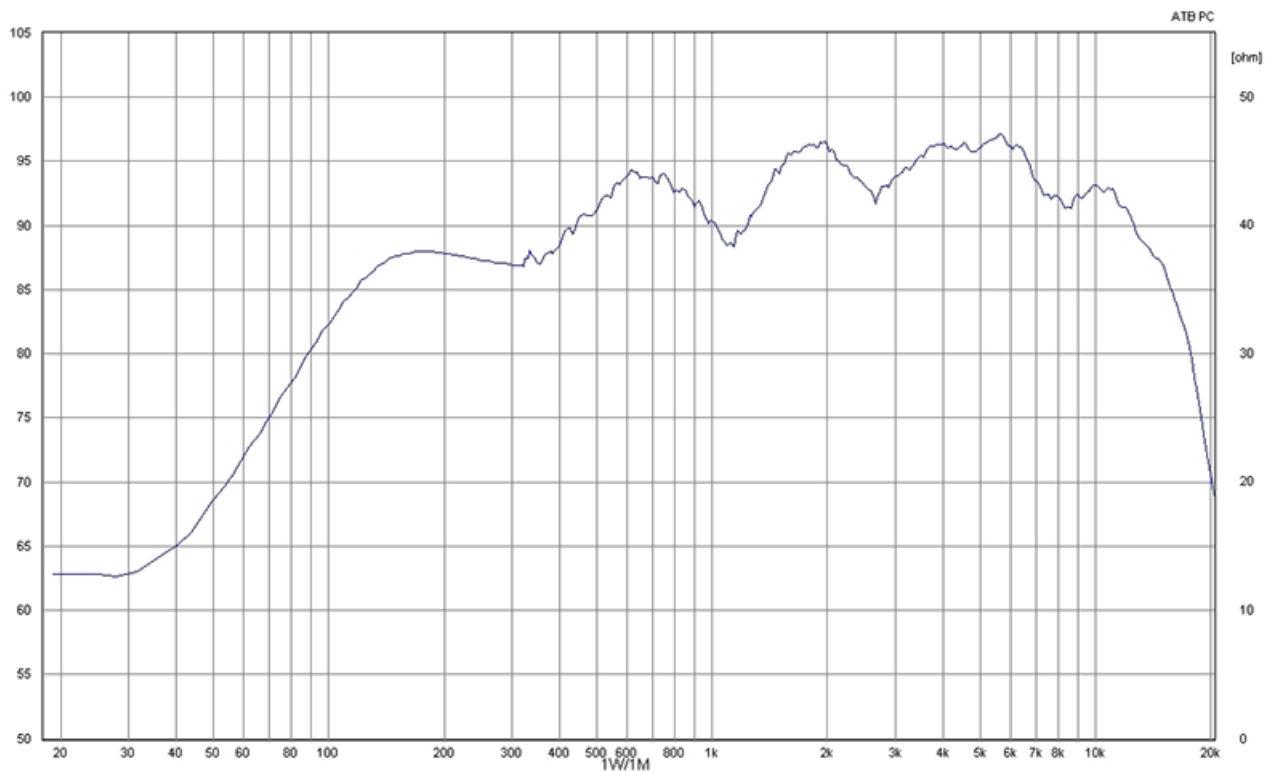


## POLAR DIAGRAMS

Copyright by Four-Audio GmbH & Co KG Licensed to AAC

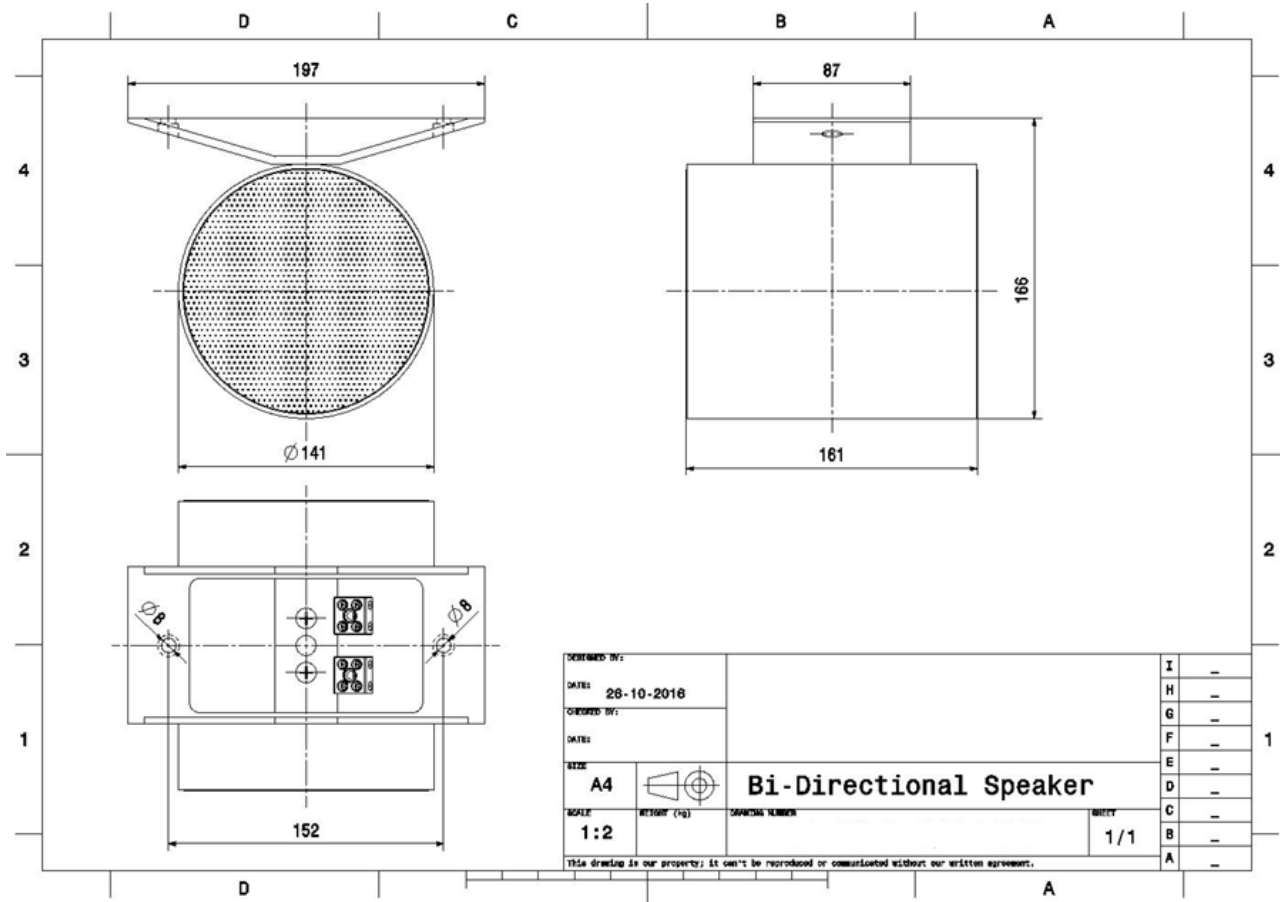


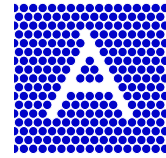
## FREQUENCY RESPONSE DIAGRAMS





**TECHNICAL DIAGRAMS**





## TECHNICAL DATA (ELECTRICAL)

Description	BIPS-10W-AL
Power	10/6/3/1,5 W
Impedance (100V)	1000/1667/3333/6667 ohm
Frequency Range	237 - 12.400 Hz
Frequency Response	79 - 17.500 Hz
Sensitivity, IEC268-5, 1W/1m	89 dB
Sensitivity, EN54-24, Pmax./4m	86 dB
Sensitivity EN54-24, 1W/4m	77 dB
Sensitivity EN54-24, 1W/1m	89,6 dB
Sensitivity 1W/1m @ 1KHz	87 dB
Dispersion -6dB, 500Hz	h/v 2x130°
Dispersion -6dB, 1KHz	h/v 2x150°
Dispersion -6dB, 2KHz	h/v 2x145°
Dispersion -6dB, 4KHz	h/v 2x75°

## TECHNICAL DATA (MECHANICAL)

Dimensions	201x176x160 mm
IP Rating	IP65
Weight (net)	2,35 kg
Temperature range	-25 / +70 C
Mounting	Screws
Connector	2-pin ceramic block
Maximum cable cross section	8mm <sup>2</sup>
Max. cable cross section loop	2x2mm <sup>2</sup>
Colour	RAL 9010

**All rights reserved.**

Information contained in this document is believed to be accurate, however no representation or warranty is given and Audemo-systems in Germany assumes no liability with respect to the accuracy of such information.



Member of the ZVEI - Central Association  
for the Electrical Engineering and Electrical  
Industry eV Safety Association



**AUDEMO - SYSTEMS GmbH (Headquarter)**

Schatzbogen 62 81829 Munchen  
Tel.: +49 (0) 89 1 4 56 78 47 - 0, Fax: +49 (0) 89 1 4 56 78 47- 2900  
info@audemo-systems.de, www.audemo-systems.de