



# PB-3100WA


## 2-Way Line-Array Module Loudspeaker

Made  
in  
Germany

**EN 54 24**



- Waveguide Technology
- 2-Way Bass reflex
- IP65



EN 54-24:2008  
Ref. Nr.: 021-09  
ID-Code: SAA-LS26  
0068-CPR-XXXX

---

AUDEMO-SYSTEMS GmbH Schatzbogen 62  
81829 München, Germany

CE-Symbol gemäß Richtlinie 93/68EWG

### APPLICATION

- Public Address and Voice Alarm
- Background Music
- Audio Visual

### AREA OF USE

- Health
- Education
- Retail
- Hospitality
- Stadiums
- Transportation
- Theme parks
- Military

### OVERVIEW

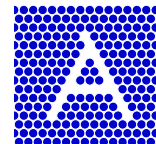
The PB-3100WA is the compact powerhouse with the specially developed waveguide technology. Whether sports venues, exhibition halls or stages - the PB-3100WA offers a club atmosphere through an exceptional sound experience with excellent speech intelligibility, certified according to EN54-24.

The attractive design in an impact-resistant ABS housing with an aluminium grille is available in white. The 100W speaker is equipped with two 4" performance mid-bass woofers, a 2-way bass reflex system and a high-performance tweeter including waveguide in D'Appolito arrangement.

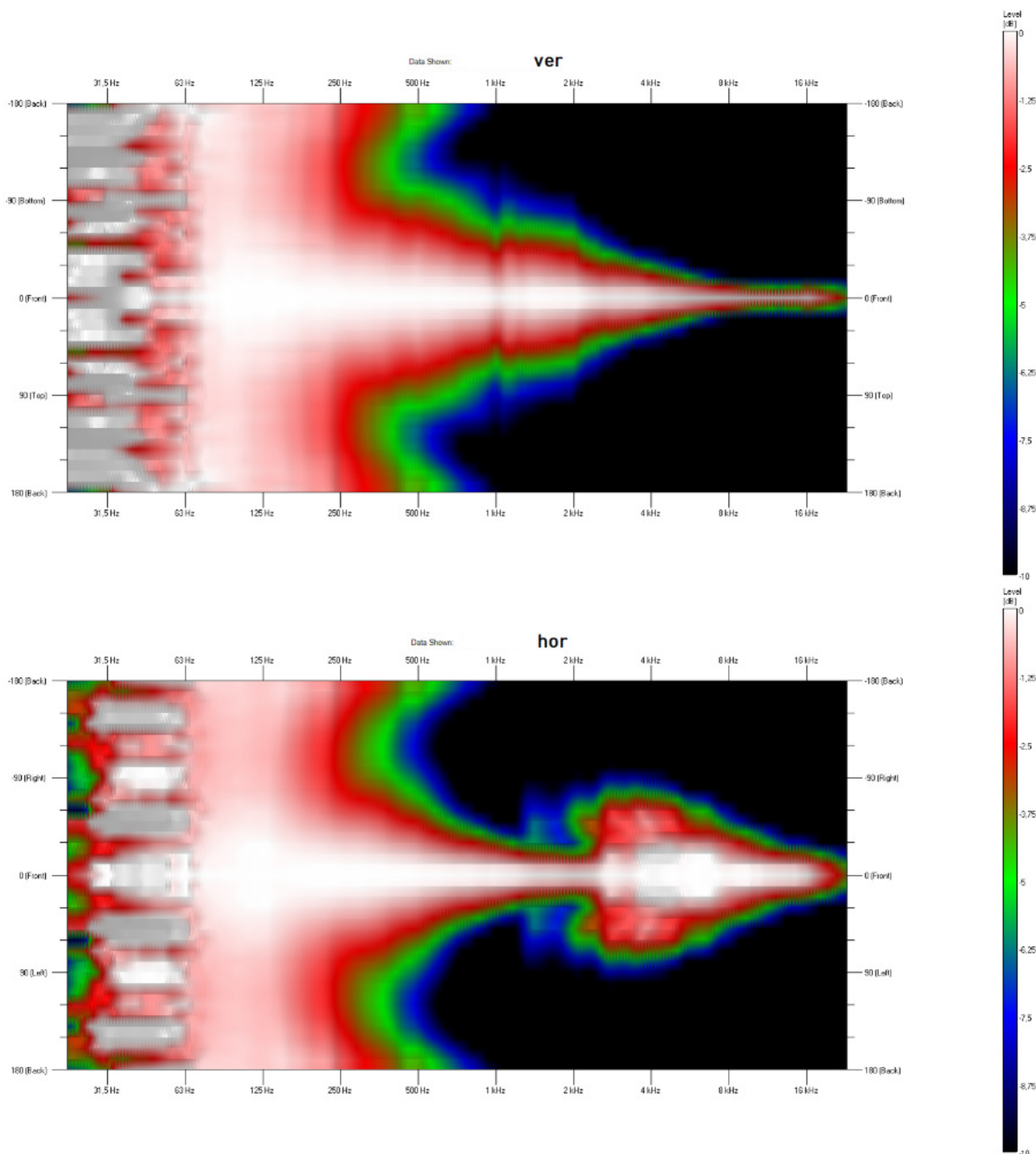
A tweeter switch provides a 4dB boost for possible sound correction in near-wall and near-ceiling installations. The loudspeaker offers 3 different 100V power adjustments, low impedance operation is also possible.

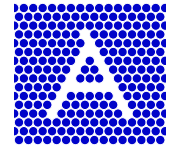
The loudspeaker is weatherproof with IP65 protection rating. A sturdy aluminium bracket ensures flexible mounting, indoors as well as outdoors. The connection is made via screw terminals for cable cross-sections up to 4 mm<sup>2</sup>, and the feed line into the enclosure via a PG11 cable gland in the cover plate.

This loudspeaker is also available as a professional line array.

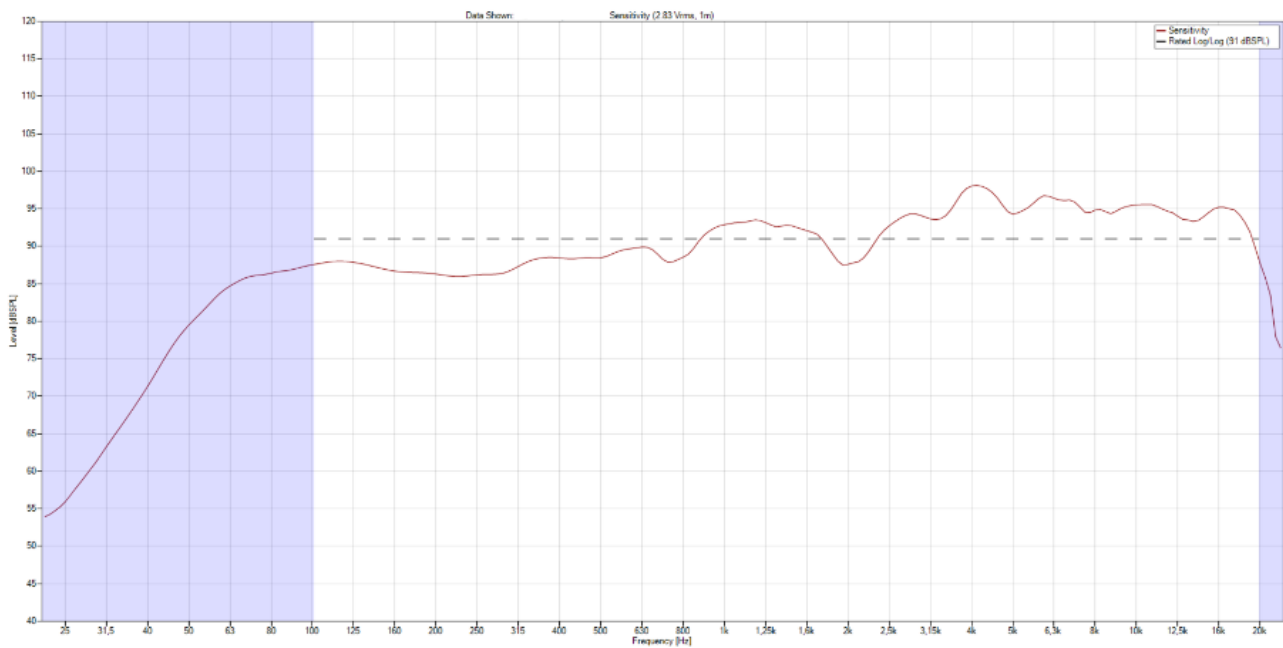


**POLAR DIAGRAMS**



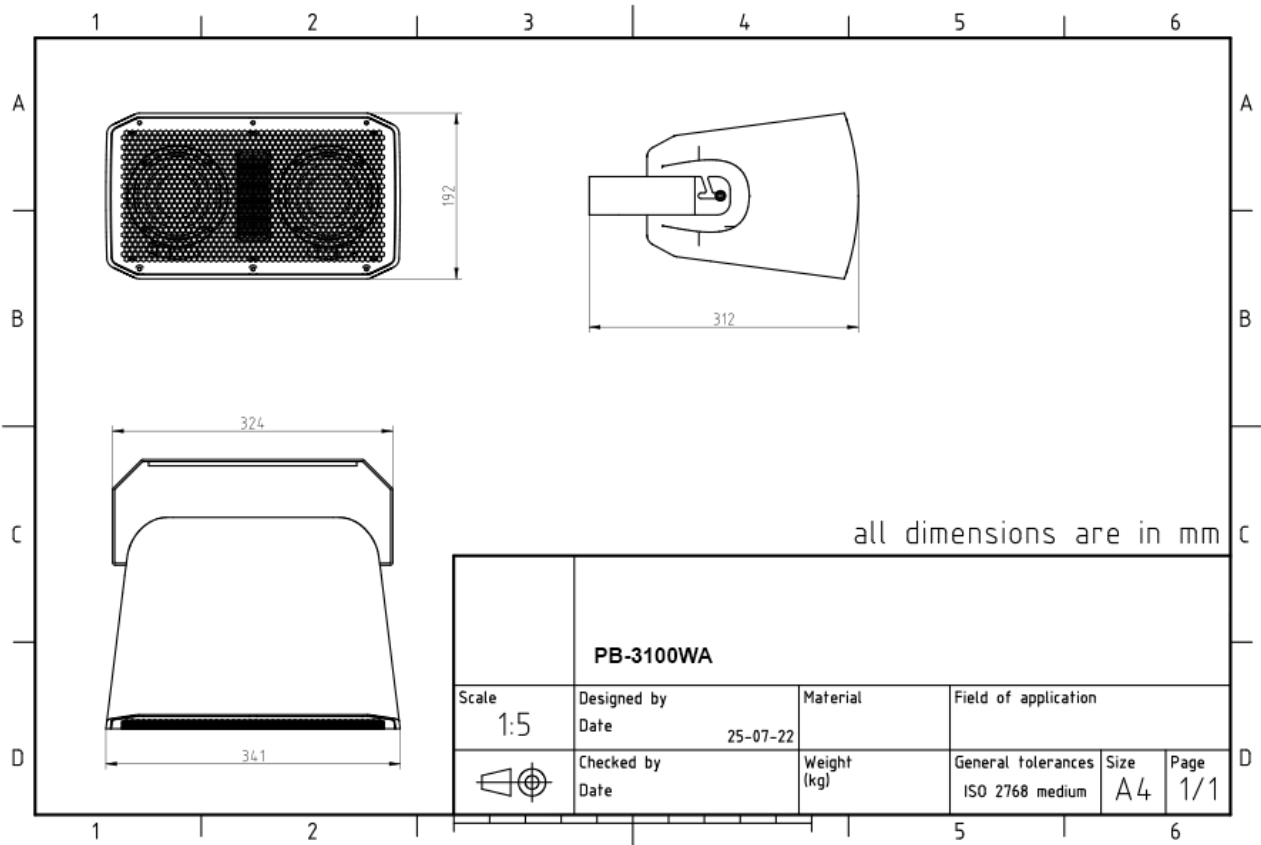


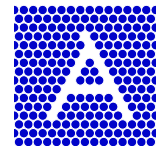
## FREQUENCY RESPONSE DIAGRAMS





**TECHNICAL DIAGRAMS**





## TECHNICAL DATA (ELECTRICAL)

Description	PB-3100WA
Power	100/50 /25/12,5W
Impedance (100V)	100/200/400/800 or 1x4 ohm
Frequency Range	54-20.500 Hz
Frequency Response	49-22.000 Hz
Sensitivity EN54-24, Pmax/4m	95.1 dB
Sensitivity EN54-24, 1W/4m	74.3 dB
Sensitivity, IEC268-5, 1W/1m,	96 dB
Sensitivity, IEC268-5, 1W/1m, peak	91 dB / 95 dB (Tweeter +4dB)
Dispersion -6dB, 500Hz	h160° / v230°
Dispersion -6dB, 1KHz	h65° / v140°
Dispersion -6dB, 2KHz	h120° / v100°
Dispersion -6dB, 4KHz	h145° / v68°

## TECHNICAL DATA (MECHANICAL)

Dimensions	341 x 192 x 245 mm
IP Rating	IP65
Weight (net)	6,5 kg
Temperature range	-10 / +55 °C
Mounting	Mounting bracket
Connector	Screw terminal
Maximum cable cross section	4mm <sup>2</sup>
Terminal diameter	2,3 mm
Colour	white

### All rights reserved.

Information contained in this document is believed to be accurate, however no representation or warranty is given and Audemo-systems in Germany assumes no liability with respect to the accuracy of such information.

### AUDEMO - SYSTEMS GmbH (Headquarter)

Schatzbogen 62 81829 Munchen  
Tel.: +49 (0) 89 1 4 56 78 47 - 0, Fax: +49 (0) 89 1 4 56 78 47- 2900  
info@audemo-systems.de, www.audemo-systems.de

**ZVEI:**

Member of the ZVEI - Central Association  
for the Electrical Engineering and Electrical  
Industry eV Safety Association



**PADES**  <sup>®</sup> 2000-Series