



## WMS-50W-ABS

50 Watts Monitor / Wall mount Loudspeaker



**EN 54 24**



- Distinctive design
- Excellent sound
- IP 65

**CE**  
23

EN 54-24:2008  
Ref. Nr.: 011-13  
ID-Code: SAA-LS11  
0068-CPR-183/2023

---

AUDEMO-SYSTEMS GmbH Schatzbogen 62  
81829 München, Germany

CE-Symbol gemäß Richtlinie 93/68EWG

### APPLICATION

- Public Address and Voice Alarm
- Background Music
- Audio Visual

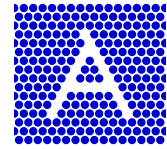
### AREA OF USE

- Health
- Education
- Retail
- Hospitality
- Stadiums
- Transportation
- Theme parks
- Military

### OVERVIEW

The compact monitor speaker impresses by a sophisticated design and by its powerful sound. Perfectly suitable for installations where high sound quality is needed. The 50W powered speaker is equipped with a high quality 2-way system and a 100V transformer with 3 power adjustments. Also, the low impedance operation with 8 ohm is possible. The impact-resistant, UV-resistant ABS plastic housing in white assures enduring stability. For additional reliability, a wetness impregnation of the speaker is provided.

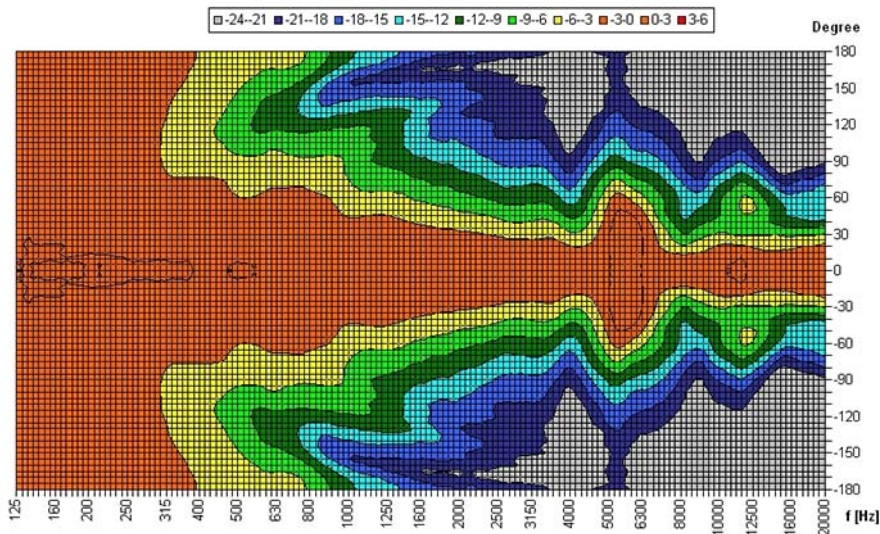
The speaker is also secured with protection class IP 65 against the risks of environmental influences. A comfortable connection of the speaker is made possible by a stable screw terminal with contact protection. Quick and easy mounting with wall mounting bracket.



**POLAR DIAGRAMS**

**Horizontal Isobars**

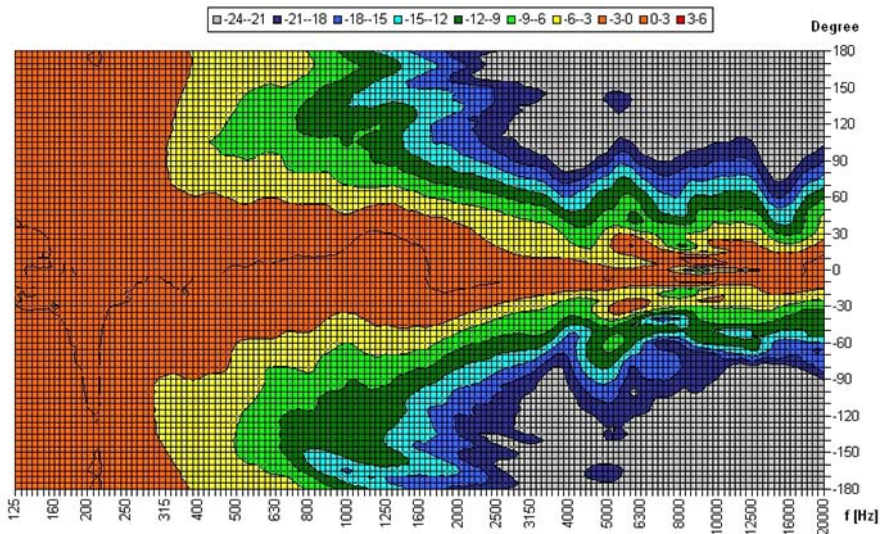
Copyright by Four-Audio GmbH & Co KG Licensed to AAC



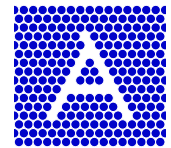
Parameters: Cyclic Move: 0° ; Symmetry: average sym ; Freq.Smooth: 1/3 Oct ; Ang.Resol.: 5° ; Rel. to: 0° Axis 0°

**Vertical Isobars**

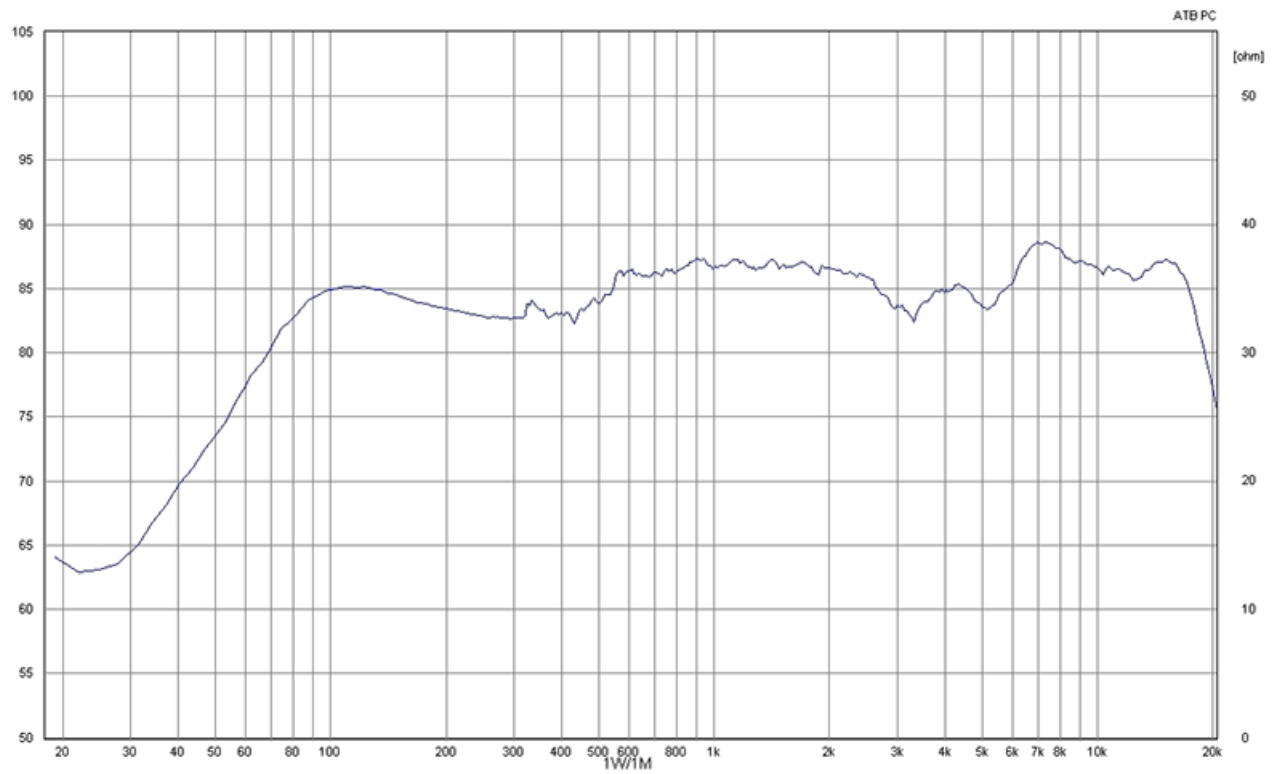
Copyright by Four-Audio GmbH & Co KG Licensed to AAC

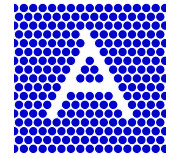


Parameters: Cyclic Move: 0° ; Symmetry: no symmetry ; Freq.Smooth: 1/3 Oct ; Ang.Resol.: 5° ; Rel. to: -5° Axis 0°

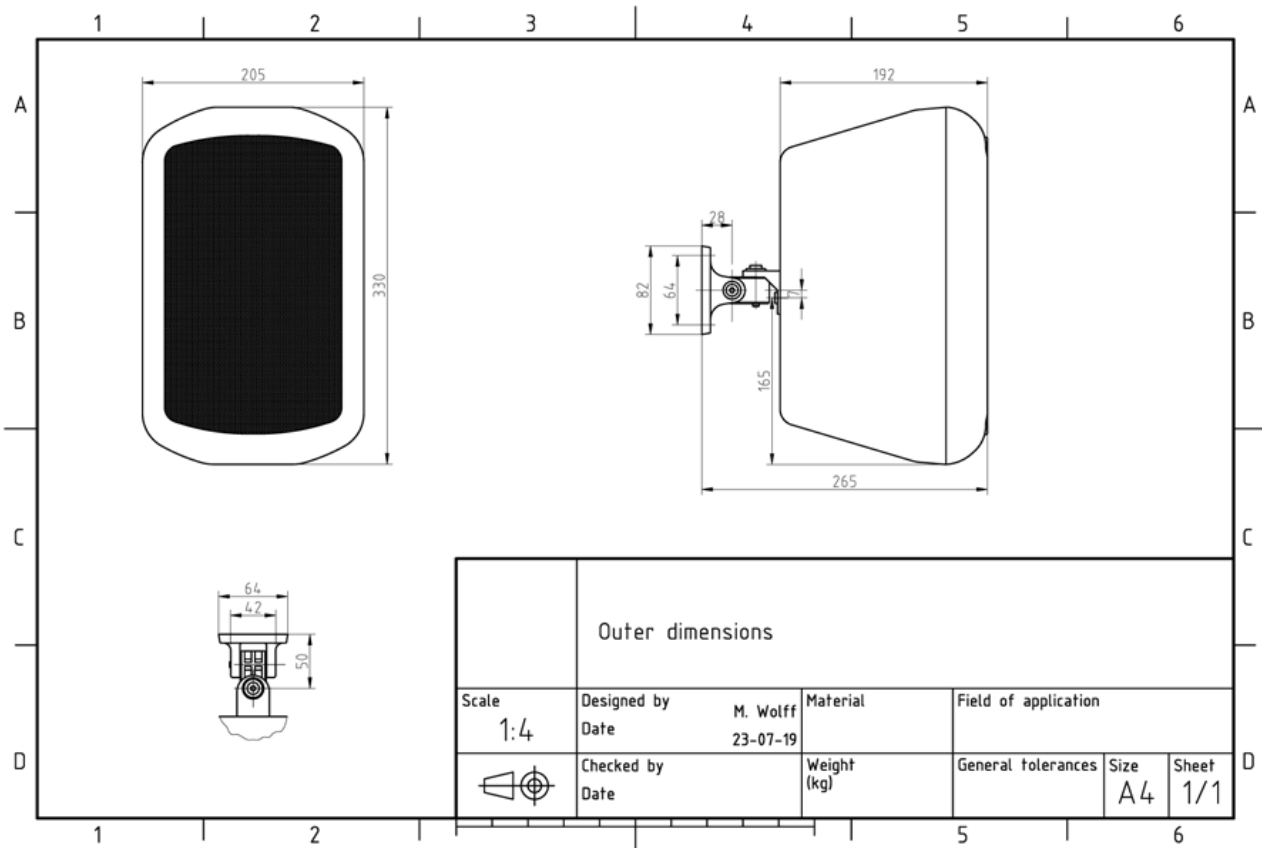


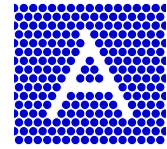
## FREQUENCY RESPONSE DIAGRAMS





## TECHNICAL DIAGRAMS





## TECHNICAL DATA (ELECTRICAL)

Description	WMS-50W-ABS
Power	50/25/12,5/6,25 (8ohm) W
Impedance (100V)	200/400/800/1600 ohm
Frequency Range	52 - 24.000 Hz
Frequency Response	48 - 25.000 Hz
Sensitivity IEC268-5 , 1W/1m	84,8 dB
Sensitivity EN54-24, Pmax/4m	91 dB
Sensitivity, rated noise power / 4m	91 dB
Sensitivity EN54-24, 1W/4m	72,8 dB
Sensitivity EN54-24, 1W/1m	84,8 dB
Sensitivity 1W/1m @ 1KHz	88 dB
Dispersion -6dB, 500Hz	h/v 360
Dispersion -6dB, 1KHz	h 200° v 155°
Dispersion -6dB, 2KHz	h 110° v 120°
Dispersion -6dB, 4KHz	h 80° v 25°

## TECHNICAL DATA (MECHANICAL)

Dimensions	326x202x192 mm
IP Rating	IP65
Weight (net)	3,65 kg
Temperature range	-25 / +70 °C
Mounting	Swivel bracket
Connector	6-pin screw terminal
Maximum cable cross section	4,9mm <sup>2</sup>
Max. cable cross section loop	2x1,2mm <sup>2</sup>
Colour	RAL 9010

**All rights reserved.**

Information contained in this document is believed to be accurate, however no representation or warranty is given and Audemo-systems in Germany assumes no liability with respect to the accuracy of such information.



Member of the ZVEI - Central Association  
for the Electrical Engineering and Electrical  
Industry eV Safety Association



**AUDEMO - SYSTEMS GmbH (Headquarter)**

Schatzbogen 62 81829 Munchen  
Tel.: +49 (0) 89 1 4 56 78 47 - 0, Fax: +49 (0) 89 1 4 56 78 47- 2900  
info@audemo-systems.de, www.audemo-systems.de