



## WMS-30W-ABS

30 Watts Monitor / Wall mount Loudspeaker



**EN 54 24**



- Distinctive design
- Excellent sound
- IP 65

<b>CE</b> 23	EN 54-24:2008
	Ref. Nr.: 011-13
	ID-Code: SAA-LS11
	0068-CPR-183/2023
AUDEMO-SYSTEMS GmbH Schatzbogen 62 81829 München, Germany	
CE-Symbol gemäß Richtlinie 93/68EWG	

### APPLICATION

- Public Address and Voice Alarm
- Background Music
- Audio Visual

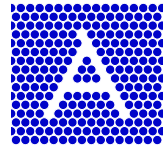
### AREA OF USE

- Health
- Education
- Retail
- Hospitality
- Stadiums
- Transportation
- Theme parks
- Military

### OVERVIEW

The compact monitor speaker impresses by a sophisticated design and by its powerful sound. Perfectly suitable for installations where high sound quality is needed. The 30W powered speaker is equipped with a high quality 2-way system and a 100V transformer with 3 power adjustments. Also, the low impedance operation with 8 ohm is possible. The impact-resistant, UV-resistant ABS plastic housing in white assures enduring stability. For additional reliability, a wetness impregnation of the speaker is provided.

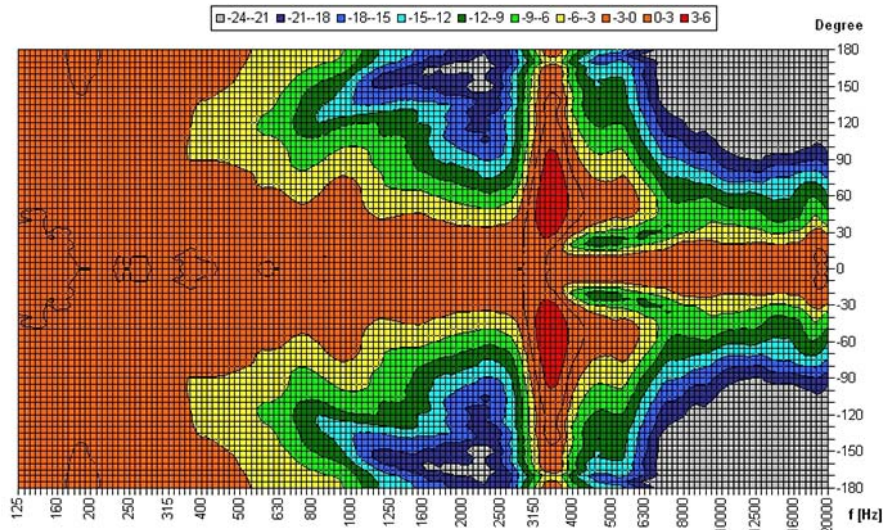
The speaker is also secured with protection class IP 65 against the risks of environmental influences. A comfortable connection of the speaker is made possible by a stable screw terminal with contact protection. Quick and easy mounting with wall mounting bracket.



## POLAR DIAGRAMS

Copyright by Four-Audio GmbH & Co KG Licensed to AAC

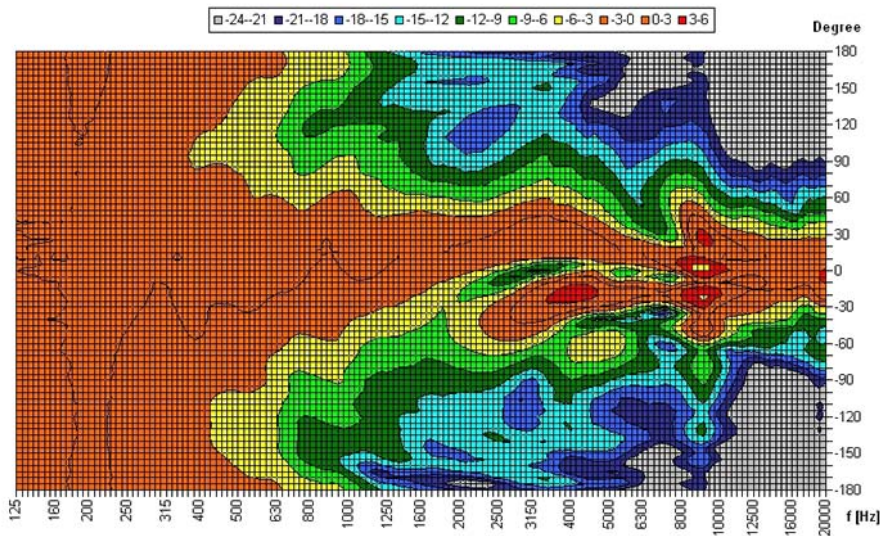
Horizontal Isobars



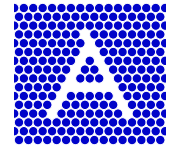
Parameters: Cyclic Move: 0° ; Symmetry: average sym ; Freq.Smooth: 1/3 Oct ; Ang.Resol: 5° ; Rel. to: 0° Axis ± 0°

Copyright by Four-Audio GmbH & Co KG Licensed to AAC

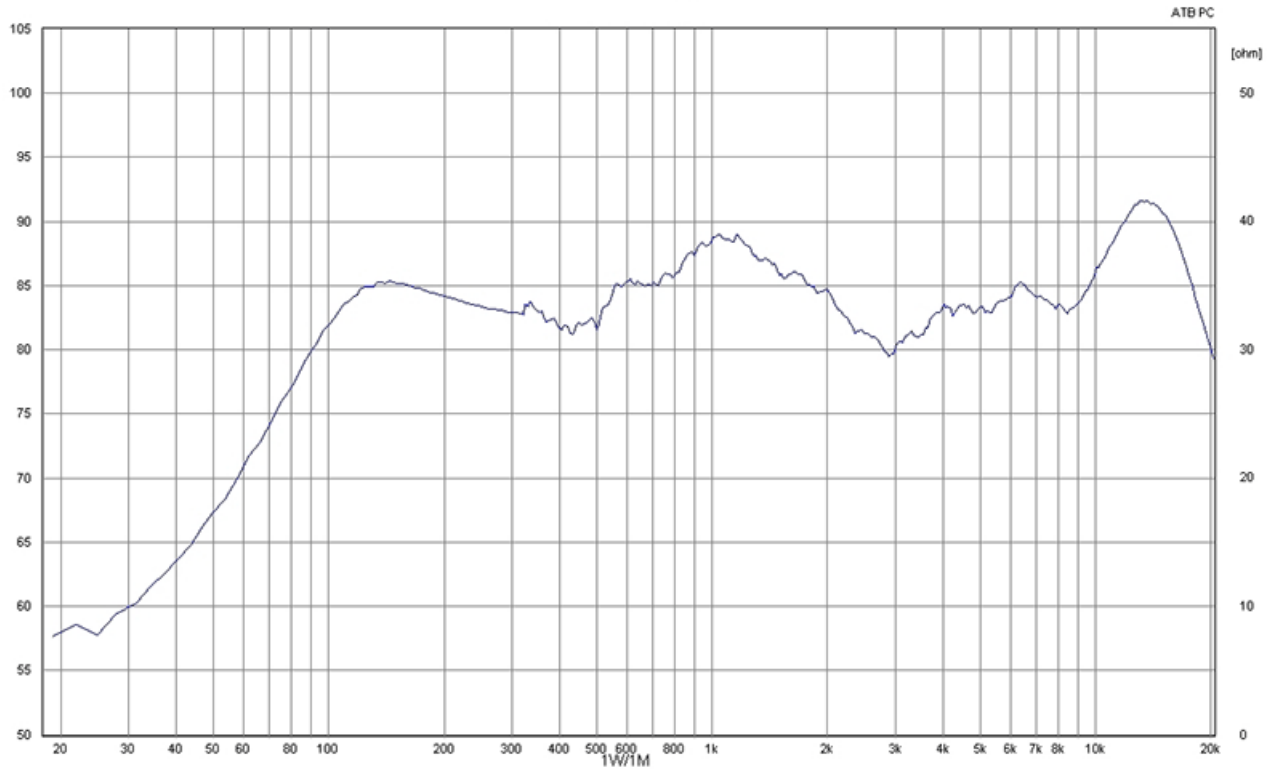
Vertical Isobars

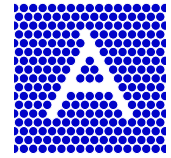


Parameters: Cyclic Move: 0° ; Symmetry: no symmetry ; Freq.Smooth: 1/3 Oct ; Ang.Resol: 5° ; Rel. to: 15° Axis ± 0°

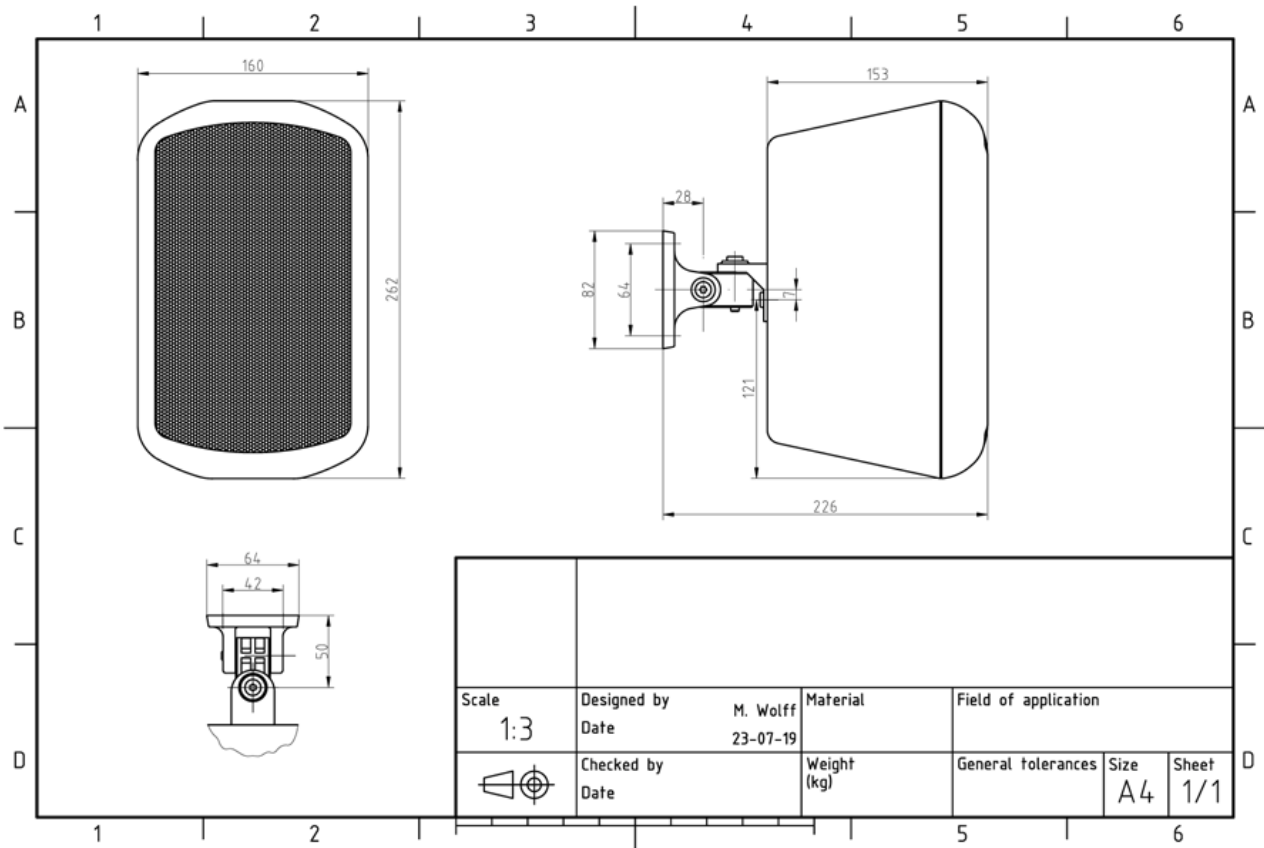


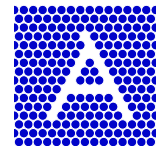
**FREQUENCY RESPONSE DIAGRAMS**





**TECHNICAL DIAGRAMS**





## TECHNICAL DATA (ELECTRICAL)

Description	WMS-30W-ABS
Power	30/15/7,5/2,5 (8ohm) W
Impedance (100V)	333/667/1333/4000 ohm
Frequency Range	60 - 24.000 Hz
Frequency Response	50 - 25.000 Hz
Sensitivity IEC268-5 , 1W/1m	82,4 dB
Sensitivity EN54-24, Pmax/4m	86,0 dB
Sensitivity EN54-24, 1W/4m	70,4 dB
Sensitivity EN54-24, 1W/1m	82,4 dB
Sensitivity 1W/1m @ 1KHz	84 dB
Dispersion -6dB, 500Hz	h/v 360
Dispersion -6dB, 1KHz	h 200° v 160°
Dispersion -6dB, 2KHz	h 130° v 100°
Dispersion -6dB, 4KHz	h 120° v 40°

## TECHNICAL DATA (MECHANICAL)

Dimensions	260x160x152 mm
IP Rating	IP65
Weight (net)	2,50 kg
Temperature range	-25 / +70 °C
Mounting	Swivel bracket
Connector	6-pin screw terminal
Maximum cable cross section	2,5 mm
Max. cable cross section loop	4,9mm <sup>2</sup>
Colour	RAL 9010

### All rights reserved.

Information contained in this document is believed to be accurate, however no representation or warranty is given and Audemo-systems in Germany assumes no liability with respect to the accuracy of such information.



Member of the ZVEI - Central Association for the Electrical Engineering and Electrical Industry eV Safety Association



### AUDEMO - SYSTEMS GmbH (Headquarter)

Schatzbogen 62 81829 München  
 Tel.: +49 (0) 89 1 4 56 78 47 - 0, Fax: +49 (0) 89 1 4 56 78 47- 2900  
 info@audemo-systems.de, www.audemo-systems.de