



# CSFLD-20W-200


## 20 Watts Frameless Ceiling Loudspeaker



**EN 54 24**



- frameless design
- also suitable for very thin ceilings
- WAGO connector 221



EN 54-24:2008  
Ref. Nr.: 002-18  
ID-Code: SAA-1802  
0068-CPR-184/2023

---

AUDEMO-SYSTEMS GmbH Schatzbogen 62  
81829 München, Germany

CE-Symbol gemäß Richtlinie 93/68EWG

### APPLICATION

- Public Address and Voice Alarm
- Background Music
- Audio Visual

### AREA OF USE

- Health
- Education
- Retail
- Hospitality
- Stadiums
- Transportation
- Theme parks
- Military

### OVERVIEW

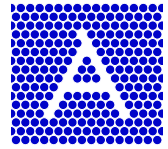
Inspired by the look of contemporary LED lights, the frameless design of the new 10W loudspeakers has all the makings of an instant classic. The 20W powered speaker is equipped with a 200mm full-range loudspeaker and a 100V transformer with 3 power adjustments. The powder-coated metal housing in RAL 9016 guarantees long-term stability. For additional reliability, the speaker is impregnated against wetness.

The speaker is also secured with protection class IP 21C against the security risks of environmental influences. Fast and easy installation through WAGO 221 connector and strong spring clamps with protective caps for vibration damping. The connecting cables can be supplied by rubber grommets in the fire dome.

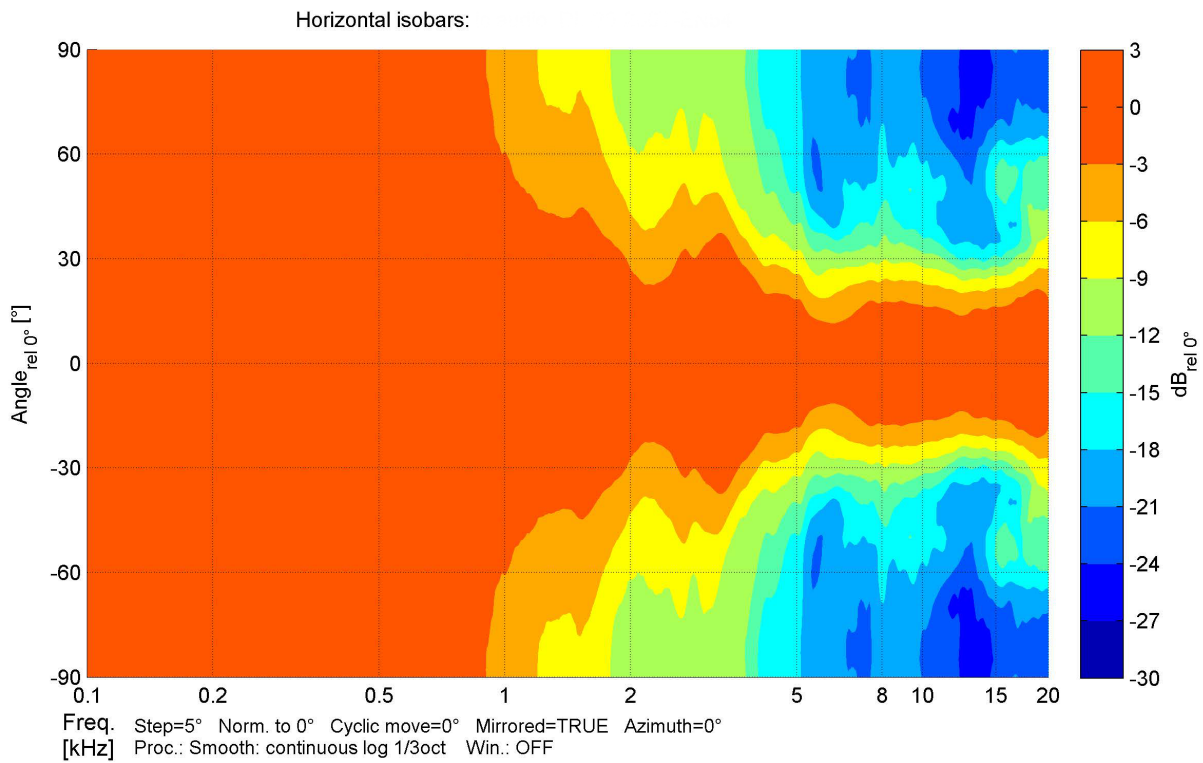
Special paint of the speaker in 4-digit RAL or NCS colour available at extra cost.

The fire dome is included in the delivery.

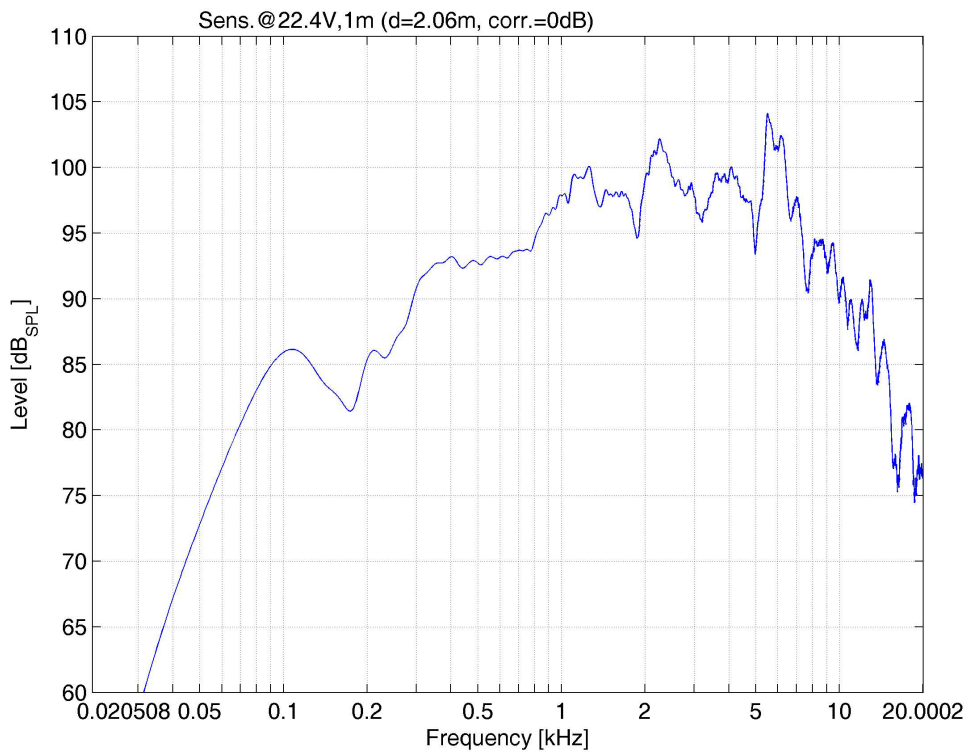
This speaker is suitable for a ceiling strength of approx. 1-45 mm. Our specification is primarily related to solid ceilings. An increase in the ceiling depth could be necessary for ceilings with softer materials. Stronger cables and other fittings may also result in changes to the general setup. With regard to the variety of materials and manufacturers, we recommend installing a speaker sample in the ceiling first to define the exact requirements.



## POLAR DIAGRAMS

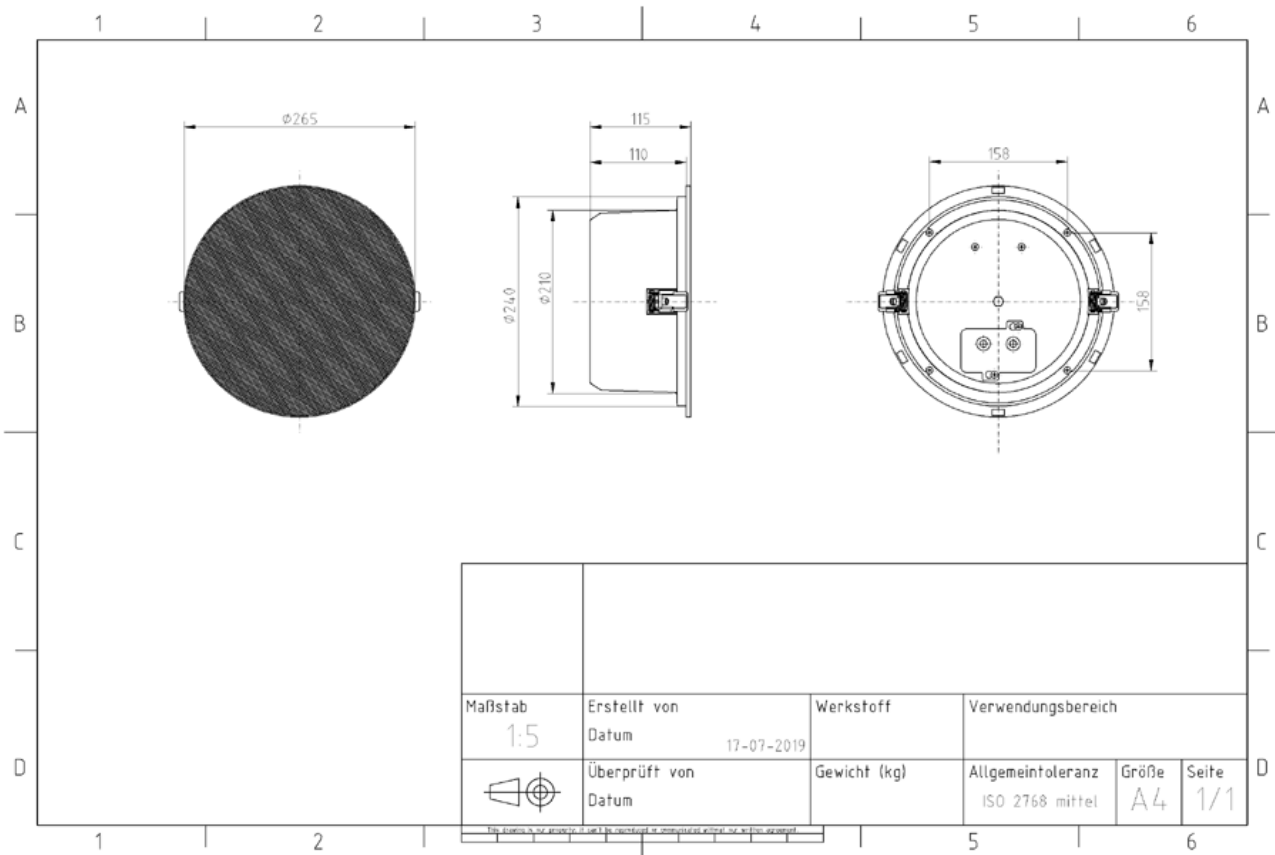


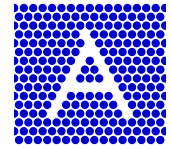
## FREQUENCY RESPONSE DIAGRAMS





## TECHNICAL DIAGRAMS





## TECHNICAL DATA (ELECTRICAL)

Description	CSFLD-20W-200
Power	20/10/5 W
Impedance (100V)	500/ 1000/ 2000 ohm
Frequency Range	60 - 17.500 Hz
Frequency Response	100 -20.000 Hz
Sensitivity , IEC268-5, 1W/1m	94,8 dB
Sensitivity , EN54-24, Pmax./4m	95.4 dB
Sensitivity EN54-24, 1W/4m	85,2 dB
Sensitivity EN54-24, 1W/1m	97,8 dB
Sensitivity 1W/1m @ 1KHz	98 dB
Dispersion -6dB, 500Hz	180°
Dispersion -6dB, 1KHz	155°
Dispersion -6dB, 2KHz	100°
Dispersion -6dB, 4KHz	60°

## TECHNICAL DATA (MECHANICAL)

Dimensions	265x115 mm
IP Rating	IP21
Weight (net)	1,60 kg
Ceiling Cut-out	246 - 252mm
Temperature range	-10 / +55 °C
Mounting	Quick fit mounting
Connector	WAGO 221 connector
Maximum cable cross section	4mm <sup>2</sup>
Max. cable cross section loop	4mm <sup>2</sup>
Colour	RAL 9016

### All rights reserved.

Information contained in this document is believed to be accurate, however no representation or warranty is given and Audemo-systems in Germany assumes no liability with respect to the accuracy of such information.



Member of the ZVEI - Central Association  
for the Electrical Engineering and Electrical  
Industry eV Safety Association



### AUDEMO - SYSTEMS GmbH (Headquarter)

Schatzbogen 62 81829 Munchen  
Tel.: +49 (0) 89 1 4 56 78 47 - 0, Fax: +49 (0) 89 1 4 56 78 47- 2900  
info@audemo-systems.de, www.audemo-systems.de